

80SJNB
Jitter, Noise, BER, and Serial Data Link Analysis Software
Printed Help Document

Copyright © Tektronix. All rights reserved. Licensed software products are owned by Tektronix or its subsidiaries or suppliers, and are protected by national copyright laws and international treaty provisions.

Tektronix products are covered by U.S. and foreign patents, issued and pending. Information in this publication supersedes that in all previously published material. Specifications and price change privileges reserved.

TEKTRONIX and TEK are registered trademarks of Tektronix, Inc.

TEKPROBE, and FrameScan are registered trademarks of Tektronix, Inc.

Contacting Tektronix

Tektronix, Inc.
14200 SW Karl Braun Drive
P.O. Box 500
Beaverton, OR 97077
USA

For product information, sales, service, and technical support:

- In North America, call 1-800-833-9200.
- Worldwide, visit www.tektronix.com to find contacts in your area.

Table of Contents

Welcome

Welcome to the Jitter, Noise, BER, and Serial Data Link Analysis Software	1
---	---

Preface

Related Documentation	3
GPIB Information	3
Relevant Web Sites	3
Conventions	3
Types of Online Help Information	4
Using Online Help	4
Feedback	5

Getting Started

Product Description	7
Requirements and Restrictions	7
Accessories	8
Connecting to a Device Under Test (DUT)	8
Deskewing Probes and Channels	8
The Importance of Jitter and Noise Separation	9

Operating Basics

About Operating Basics	11
General Information	
Starting the 80SJNB Application	11
Returning to the Oscilloscope Application	12
Returning to the 80SJNB Application	12
Minimizing and Maximizing the Application	13
Exiting the Application	13
Installation Directory	13
File Name Extensions	14
File Menus	14
View Menus	15
Setup Menus	16
Oscilloscope Settings	16
About the Results	17
Clearing Results	17
About Plotting	17

Navigating the User Interface	
Windows User Interface	
About the User Interface	17
User Interface Items Definitions.....	18
80SJNB User Interface Information	
About Navigation	19
About the 80SJNB Tool Bar	20
MATLAB User Interface Information	
MATLAB® User Interface.....	22
Setting up the Application for Analysis	
About Configuring the Application for Analysis.....	23
Configuring Sources	
About Acquiring Data	23
Selecting Clock Recovery.....	24
Selecting Phase Reference	25
Selecting the Data Pattern.....	25
Selecting the Signal Conditioning.....	26
Selecting the Pattern Sync	26
Selecting the Source	27
About Spread Spectrum Clocking (SSC).....	28
Signal Path Conditioning	
About Signal Path Settings.....	30
Filter	
Setting Filter Conditions	31
Channel	
Setting Channel Conditions	31
Frequency Domain.....	31
Time Domain	33
Equalizer	
About the Equalizer.....	34
Equalizer Taps.....	35
Saving and Loading Taps.....	39
Analysis Settings	
About Analysis Settings.....	40
About Measurements	
About Displaying Measurements	41
Jitter Measurement Definitions.....	41
Dual Dirac Measurement Definitions.....	42
Noise Measurement Definitions	42
SSC Modulation Measurement Definitions	43
About Taking Measurements	43
Acquiring Data	

Steps to Acquire Data	43
Save and Recall Setup Files	
Saving and Recalling Setup Files	44
Saving a Setup File	44
Recalling a Saved Setup File	45
Save and Recall Data Files	
Saving and Recalling Data Files	45
Saving a Data File	45
Recalling A Saved Data File	46
Working with Results	
Working with Numeric Results.....	46
Working with Plots	
About Working with Plots	48
Selecting and Viewing Plots.....	49
Examining Plots.....	49
Plot Type Definitions	50
Copying Plot Images	50
Exporting Plot Data	
About Exporting Plot Files.....	51
Exporting Raw Plot Data.....	52
Plot Types	
Jitter Plots.....	54
Eye Plots	55
Noise Plots	57
Pattern Plots	57
SSC Plot.....	58
Parameters	
About Application Parameters	59
Analysis Settings	59
Acquisition Settings	60
Signal Path Settings	61
Remote Control	
Remote Control Introduction.....	63
GPIB Reference Materials.....	63
Programming Tips.....	63
Variable:Value Commands	
Syntax	65
Arguments and Queries	66
Measurements Results Queries	
Variable:Value Results Queries.....	72

Error Messages	
GPIB Commands Error Codes	73
Programming Example	
Introduction.....	74

Application Example

About the Application Example	81
-------------------------------------	----

Algorithms

About Measurement Algorithms.....	89
Test Methodology	89

Correlations

Correlation to Real-Time Oscilloscope Jitter Measurements.....	91
--	----

Index

Welcome to the Jitter, Noise, BER, and Serial Data Link Analysis Software

The 80SJNB analysis software enhances the capabilities of the DSA8200, CSA/TDS8000B, and CSA/TDS8200 series Tektronix sampling oscilloscopes. Two versions are available: 80SJNB Essentials and 80SJNB Advanced.

The **80SJNB Essentials** version provides the following features:

- Performs advanced jitter and noise analysis
- Separates jitter and noise for analysis
- Performs random and deterministic jitter analysis including BER estimation
- Displays results graphically including histograms, spectra, and bathtub curves
- Displays 2-D eye diagrams (correlated eye, probability density function (PDF) eye, and bit error rate (BER) eye)
- Saves statistical results to a data file
- Supports FFE and DFE equalization
- Allows user defined arbitrary filters
- Supports channel emulation (TDR/TDT and S-parameter based channel descriptions)
- Analysis of jitter, noise, and BER in the presence of spread spectrum clocking (SSC)

The **80SJNB Advanced** version adds:

- Signal path emulation, allowing you to emulate the environment your signal encounters from the transmitter to the receiver

What do you want to do?

[Read the product description \(see page 7\).](#)

[Go to Operating Basics \(see page 11\).](#)

Related Documentation

In addition to the online help, you can access other information on how to operate the oscilloscope and application through the following related documents.

- [Relevant Web Sites \(see page 3\)](#)
- [GPIB Information \(see page 3\)](#)
- [Types of Online Help Information \(see page 4\)](#)

GPIB Information

For information on how to operate the oscilloscope and use the application-specific GPIB commands, refer to the following items:

- The online programmers guide for your oscilloscope can provide details on how to use GPIB commands to control the oscilloscope.
- The programming examples.

Relevant Web Sites

The Tektronix Web site offers the following information:

- Understanding and Characterizing Jitter Primer, literature number 55W-16146-x.
- Jitter analysis details on the www.tektronix.com/jitter Web site.

You can also find useful information in the Fibre Channel - Methodologies for Jitter and Signal Quality Specification – MJSQ on the www.t11.org Web site.

Conventions

Online help topics use the following conventions:

- The terms "80SJNB application" or "application" refer to the 80SJNB Jitter, Noise and BER Analysis software.
- The term "oscilloscope" or "TekScope" refers to the product on which this application runs.
- The term "select" is a generic term that applies to the two mechanical methods of choosing an option: with a mouse or with the Touch Screen.

- The term "DUT" is an abbreviation for Device Under Test.
- The user interface screen graphics are from a DSA8200 Digital Signal Analyzer. There may be minor differences depending on the instrument model and software versions.
- When steps require a sequence of selections using the application interface, the ">" delimiter marks each transition between a menu and an option. For example, one of the steps to recall a setup file would appear as File > Recall Settings.

Types of Online Help Information

The online help contains the following topics:

- Getting Started topics briefly describes the application and its requirements.
- Operating Basics topics cover basic operating principles of the application. The sequence of topics reflects the steps you perform to operate the application.
- Parameters topics cover the Analysis and Configuration default settings.
- Application Examples topics demonstrates how to use jitter measurements to identify a problem with a waveform. This should give you ideas on how to solve your own measurement problems.
- GPIB Command Syntax topics contain a list of arguments and values that you can use with the remote commands and their associated parameters.

See also:

[Using Online Help \(see page 4\)](#)

Using Online Help

Online help has many advantages over a printed manual because of advanced search capabilities. The main (opening) Help screen shows a series of book icons and three tabs along the top menu, each of which offers a unique mode of assistance:

- Contents tab - organizes the Help into book-like sections. Select a book icon to open a section; select any of the topics listed under the book.
- Index tab - enables you to scroll a list of alphabetical keywords. Select the topic of interest to display the corresponding help page.
- Search tab - enables you to search the entire help contents for keywords. Select the topic of interest to display the corresponding help page. Search results do not include text contained within illustrations or screen shots.

NOTE. *Blue-underlined text indicates a hyperlink to another topic. For example, select the blue text to jump to the topic on [Feedback to Tektronix. \(see page 5\)](#)*

TIP. *When you use a mouse, the normal cursor changes to a link cursor when over an active hyperlink.*

Feedback

Tektronix values your feedback on our products. To help us serve you better, please send us suggestions, ideas, or other comments you may have about your application or oscilloscope.

You can email your feedback to techsupport@tektronix.com, FAX at (503) 627-5695, or by [phone](#)). Please be as specific as possible and include the following information:

General Information

- Oscilloscope model number, firmware version number, and hardware options, if any.
- Module and probe configuration. Include model numbers and the channel/slot location.
- Serial data standard.
- Signaling rate.
- Pattern type and length.
- Your name, company, mailing address, phone number, FAX number.

NOTE. *Please indicate if you would like Tektronix to contact you regarding your suggestion or comments.*

Application-Specific Information

- 80SJNB Software version number.
- Description of the problem such that technical support can duplicate the problem.
- If possible, save the oscilloscope waveform file as a .wfm file.
- If possible, save the oscilloscope and application .stp setup files. Refer to [Saving a Setup File \(see page 44\)](#).

Once you have gathered this information, you can contact technical support by phone or through e-mail. If using e-mail, be sure to enter "80SJNB Problem" in the subject line, and attach the .stp and .wfm files.

TIP. *To include screen shots, from the oscilloscope menu bar, select File> Export. Waveform... In the Export dialog box, enter a file name with a .bmp extension and select Save. The file is saved in the C:\My Documents\TEKSCOPE\UI directory.*

Product Description

The 80SJNB software application enhances the capabilities of the DSA8200, CSA/TDS8000B, and CSA/TDS8200 series Tektronix sampling oscilloscopes by providing Jitter, Noise, and BER analysis (Essentials) and features for de-embedding of the fixture, channel emulation, and FFE/DFE equalizer support (Advanced).

You can use this application to do the following tasks:

- Jitter and noise analysis from 0.5 Gb/s to greater than 60 Gb/s
- Jitter and noise separation (see the [importance of jitter and noise separation \(see page 9\)](#))
- Perform random and deterministic jitter and noise analysis including BER estimation
- Show results as numeric and graphical displays
- Display 2-D eye diagrams (Correlated Eye, Probability Density Function (PDF) Eye, and Bit Error Rate (BER) Eye)
- Supports FFE and DFE equalization
- Allows user defined linear arbitrary filters
- Supports Channel Emulation (TDR/TDT and S-parameter based channel descriptions)
- Analysis of jitter, noise, and BER in the presence of Spread Spectrum Clocking (SSC)
- Save results to a data file
- Save and recall instrument setups

What do you want to do?

[Review requirements and restrictions \(see page 7\)](#)

Requirements and Restrictions

Operating System. This application requires the Microsoft Windows XP operating system. Contact Tektronix about purchasing the necessary upgrades for your sampling oscilloscope.

Memory. This application requires 512 MB of memory (minimum) to perform. To verify the amount of installed memory, minimize the TekScope application, then select Start > Control Panel > System. If less than 512 MB is reported, contact Tektronix about purchasing the necessary upgrades for your instrument.

80A06 PatternSync Trigger module. This application requires that the sampling oscilloscope be equipped with a Tektronix 80A06 PatternSync Trigger module. Contact Tektronix about purchasing the module for your sampling oscilloscope.

82A04 Phase Reference module. This application requires that the sampling oscilloscope be equipped with a Tektronix 82A04 Phase Reference module to perform analysis in the presence of spread spectrum clocking (SSC). Contact Tektronix about purchasing the module for your sampling oscilloscope.

Keyboard and Mouse. You will need to use a keyboard to enter names for some save and export operations. A mouse is not required but simplifies screen selections.

Accessories

There are no standard accessories for this product. However, you can refer to the product data sheet available on the Tektronix Web site for information on optional accessories relevant to your application.

A second monitor connected to the TekScope is recommended for simultaneous viewing of the oscilloscope screen and the 80SJNB application screen.

Refer to [Requirements and Restrictions \(see page 7\)](#) for additional items required to use the 80SJNB application.

Connecting to a Device Under Test (DUT)

You can use any compatible probe or cable interface to connect between your DUT and the instrument.



WARNING. *To avoid electric shock, remove power from the DUT before attaching probes. Do not touch exposed conductors except with the properly rated probe tips. Refer to the probe manual for proper use.*

Refer to the General Safety Summary in your oscilloscope manual.

See also:

[Deskewing Probes and Channels \(see page 8\)](#)

Deskewing Probes and Channels

To ensure accurate results for two-channel measurements, it is important to first deskew the probes or cables and oscilloscope channels before you take measurements.

NOTE. *Deskewing is performed from the TekScope application, not from the 80SJNB application. Refer to the TekScope User Online Help for information and procedures for deskewing probes and channels.*

The Importance of Jitter and Noise Separation

Jitter is an important characteristic to analyze for serial data links, but the analysis should not stop at just jitter. To properly evaluate a data link, it is necessary to analyze both jitter and noise.

Two components need to be added to the traditional jitter analysis:

- The noise/vertical eye closure should be considered in a manner very similar to that of jitter/horizontal eye closure.
- Jitter measurements based on the threshold crossing of a finite-speed transition should include vertical noise influence.

Depending on the magnitude of the vertical noise and the transient response of the transmitter and transmission channel, the magnitude of this influence can vary widely. Ultimately the jitter and noise analysis allows for accurate BER projections for the targeted communication link.

Tektronix has written a detailed document explaining the importance of jitter and noise separation.

1. Go to the Tektronix Web site, www.tektronix.com
2. At the Tektronix home page, select **Oscilloscopes > Application Notes and Technical Documents**

You can download a pdf of the white paper titled:

Tektronix CSA/TDS8200 Jitter Analysis Application: Jitter and Noise Analysis, BER Estimation Descriptions

About Operating Basics

The Operating Basics book covers the following tasks:

- [Navigating the user interface \(see page 19\)](#)
- [User interface information \(see page 17\)](#)
- [Using oscilloscope functions \(see page 16\)](#)
- [Setting up the application \(see page 23\)](#)
- [Viewing the measurement results as plots \(see page 17\)](#)
- [Exporting Plot Files \(see page 51\)](#)
- [Saving \(see page 44\)](#) and [recalling \(see page 45\)](#) setup files
- [Saving \(see page 45\)](#) and [recalling \(see page 46\)](#) data files

What do you want to do?

- [Start the 80SJNB Application \(see page 11\)](#)

See also:

[File Name Extensions \(see page 14\)](#)

[File Menus \(see page 14\)](#)

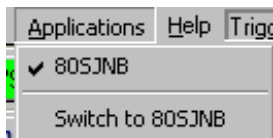
Starting the 80SJNB Application

There are several ways to start the 80SJNB application.

- If the TekScope application is minimized, you can start the 80SJNB application by selecting the shortcut located on the Windows desktop area.



- If the TekScope application is running and open, you can use the Applications menu on the menu bar and select the 80SJNB application.



- Use the Windows Start menu by selecting Start > All Programs > Tektronix Applications > 80SJNB > 80SJNB.


TIP. With a second monitor connected to the TekScope, you can move the 80SJNB application display to the second monitor, allowing you to view both screens at the same time.

See also:

[Returning to the 80SJNB Application \(see page 12\)](#)

[Returning to the Oscilloscope Application \(see page 12\)](#)

Returning to the Oscilloscope Application

The 80SJNB application fills the entire screen and hides the TekScope application. To return to the TekScope display, press the Back to Scope button  in the toolbar.

You can also minimize the 80SJNB application or exit the 80SJNB application entirely.

See also:

[Minimizing and Maximizing the Application \(see page 13\)](#)

[Exiting the Application \(see page 13\)](#)

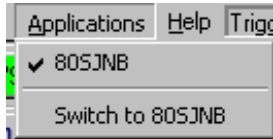
Returning to the 80SJNB Application

The TekScope application fills the entire screen. If the 80SJNB application is already running but the TekScope application is displayed on top, bring the 80SJNB application to the front using the following methods.

- Press the App button on the TekScope toolbar.




- Select Switch to 80SJNB from the Applications pull-down file menu.



TIP. If you have a keyboard attached, you can switch between running applications by pressing the *Alt + Tab* keys.

Minimizing and Maximizing the Application

To minimize the application to the Windows task bar, select the  command button in the application menu bar.

To maximize the application, select the minimized application from the Windows task bar. Alternately, if you have a keyboard attached, you can switch between displayed applications by pressing *Alt + Tab* keys.

Exiting the Application

To exit the application, select *File > Exit* or the  command button in the application menu bar.

Installation Directory

The 80SJNB software is installed in the following directory:

C:\Program Files\TekApplications\80SJNB

Save and Recall Directory

The directory structure used for saving and recalling setup and data files and exporting data is:

C:\Documents and Settings\username\"user name\"My Documents.

The default user name is Administrator.

See also:

[File Name Extensions \(see page 14\)](#)

File Name Extensions

Extension	Description
.bmp	File that uses a bitmap format
.csv	File that uses a comma separated value format
.stp	80SJNB application setup file
.jpg	File that uses a joint photographic experts group format
.mat	File that uses native MATLAB binary format and is used to store data acquired by 80SJNB
.png	File that uses a portable network graphics format
.txt	File that uses an ASCII format
.flt	80SJNB application filter file
.tap	80SJNB application equalization tap file
.wfm	File that defines time domain waveforms or a frequency domain 1-port S-parameter (created by IConnect) for channel emulation 80SJNB accepts both DSA8200 and IConnect files
.s1p	Files that define 1-port, 2-port, and 4-port frequency domain S-parameters
.s2p	
.s4p	

File Menus

The File menus allow you to save and recall application setups, data files, and recently accessed files.



CAUTION. *Do not edit a setup file or recall a file not generated by the application.*

Menu/function	Description or function
Save Settings	Saves the current application settings in a .stp file
Recall Settings	Browse to select an application setup (.stp) file to recall; restores the application and oscilloscope to the values saved in the setup file
Save Data	Saves the current acquired data in a .mat file for later analysis Saving is disabled if there is no acquired data to save or an acquisition is currently in process
Recall Data	Recall a saved data file for analysis All plots and results are based on the recalled data Recalling is disabled if an acquisition is currently in process

Menu/function	Description or function
Export Waveform	Acquired exports the raw acquired pattern before processing of the data Correlated exports the acquired waveform after filtering out the uncorrelated components
Print	Prints the displayed plots and the detailed statistics list
Print to File	Creates a file of the displayed plots and a detailed statistics list
Exit	Exits the application

See also:

[About the 80SJNB Tool Bar \(see page 20\)](#)

[Saving a Setup File \(see page 44\)](#)

[Recalling a Saved Setup File \(see page 45\)](#)

[Saving a Data File \(see page 45\)](#)

[Recalling a Saved Data File \(see page 46\)](#)

[About Exporting Plot Files \(see page 51\)](#)

View Menus

The View menus allow you to configure the display information consisting of plots and/or numerical data.

Menu/function	Description or function
1-up	Displays a single plot on the screen
2-up	Displays two plots on the screen
4-up	Displays the maximum of four plots on the screen
Plots	Hides all numeric data, expanding the displayed plot(s) to fill the entire screen
Summary - SSC	Displays the summary SSC numeric data below the plot display(s)
Summary - Signal Path	Displays the summary Signal Path numeric data below the plot display(s)
Full Numeric Results	Displays the complete list of numeric data with no plots displayed

See also:

[About the 80SJNB Tool Bar \(see page 20\)](#)

Setup Menus

The Setup menus provide access to the various configuration menus.


Menu/function	Description or function
Acquisition	Displays the Acquisition setup dialog screen to select and configure the source for measurements and control key oscilloscope setups
Signal Path	Displays the Signal Path dialog screen to define the signal path characteristics to simulate the actual conditions your signal may encounter
Analysis	Displays the Analysis dialog screen to change settings that affect how measurements are made and displayed
Default Setup	Returns the Acquisition, Signal Path, and Analysis settings to their default values See About Application Parameters (see page 59) to view the default settings for each configuration menu

[About the 80SJNB Tool Bar \(see page 20\)](#)

Oscilloscope Settings

You should return the TekScope to its default state before launching the 80SJNB Acquisition dialog box. All other acquisitions and math waveforms should be off, as well as all measurements, waveform databases, masks, and histograms. You should not have to make changes to the oscilloscope settings via the oscilloscope UI to successfully acquire data with the 80SJNB application. The most relevant oscilloscope settings are accessible using the Acquisition dialog box of the 80SJNB application.

NOTE. *Changing oscilloscope settings while the 80SJNB application is acquiring data may cause errors, unpredictable results, or failure.*

To bring the TekScope application to the front of the display, press the Back to Scope button  or minimize the 80SJNB application. Alternately, you can use the Alt + Tab keys to switch between applications if you have a keyboard attached.

See also:

[About Configuring the Application for Analysis \(see page 23\)](#)

[Returning to the Application \(see page 12\)](#)

[Minimizing and Maximizing the Application \(see page 13\)](#)

About the Results

There are two ways to view analysis results: as numeric data and as graphical plots.

You can log the results data to .csv files for viewing in a spreadsheet, database, text editor or data analysis program.


See also:

[Working with Results \(see page 46\)](#)

[Clearing Results \(see page 17\)](#)

[Exporting Plot Files \(see page 51\)](#)

Clearing Results

Press the Clear Data  button to remove the existing plot displays and results. You may want to clear the data before acquiring new data or between cycles when the Sequence mode is set to free-run.

NOTE. *The numeric results and plot files are erased each time a new acquisition cycle is started.*

About Plotting

The application displays the results as plots for more comprehensive analysis. Before or after you take measurements, you can select to display a single plot, two plots or four plots. You can select the type of data you want to view in each plot window.

See also:

[Working with Plots \(see page 48\)](#)

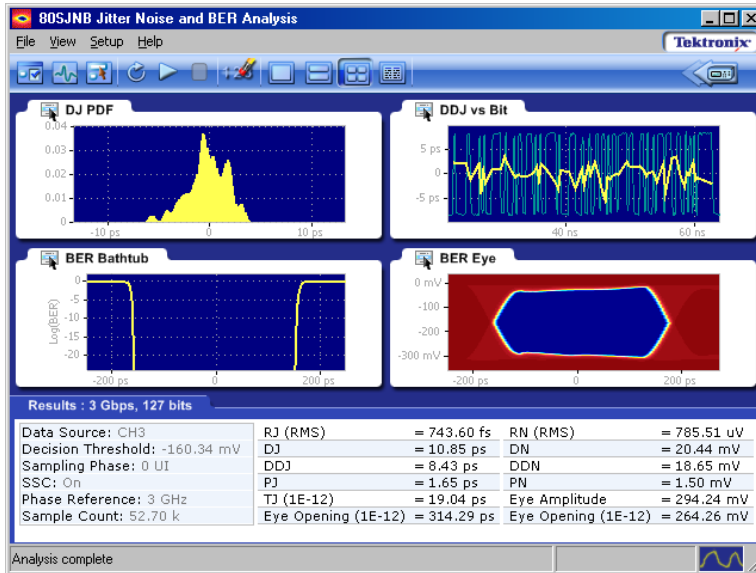
[Plot Type Definitions \(see page 50\)](#)

[About Working with Results \(see page 46\)](#)

About the User Interface

The application uses a Microsoft Windows-based user interface.

NOTE. The TekScope application is hidden when the 80SJNB application is running and not minimized.



See also:

[Starting the Application \(see page 11\)](#)

[Minimizing and Maximizing the Application \(see page 13\)](#)

[Exiting the Application \(see page 13\)](#)

[Definitions of the application user interface items \(see page 18\)](#)

User Interface Items Definitions

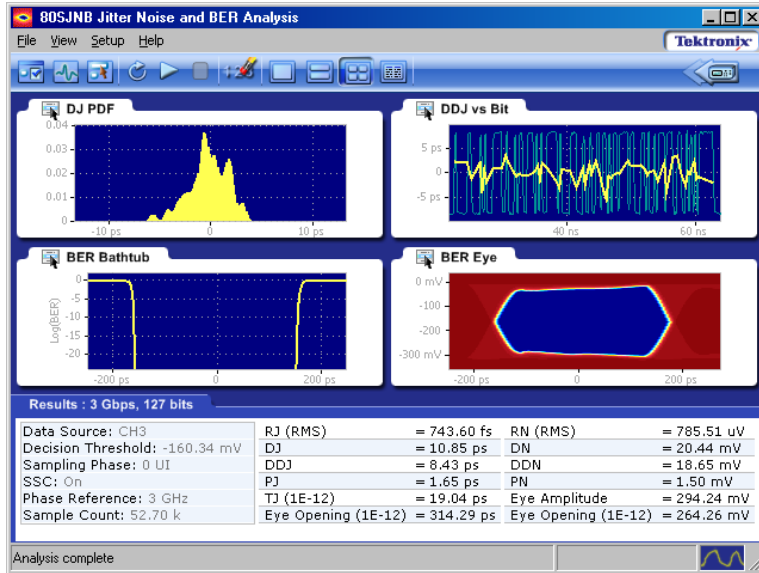
Item	Description
Area	Visual frame that encloses a set of related options
Box	Use to define an option; enter a value with the Keypad or a Multipurpose knob
Browse	Displays a window where you can look through a list of directories and files
Check box	Use to select or clear an option
Command button	Initiates an immediate action, such as the Start command button in the Control panel
Keypad	On-screen keypad that you can use to enter numeric values
Menu	All options in the application window (except the Control panel) that display when you select a menu bar item

Item	Description
Menu bar	Located along the top of the application display and contains application menus
Status bar	Line located at the bottom of the application display that shows the acquisition status and the latest Warning or Error message
Virtual keyboard	On-screen keyboard that you can use to enter alphanumeric strings, such as for file names
Scroll bar	Vertical or horizontal bar at the side or bottom of a display area that you use to move around in that area
Tool bar	Located along the top of the application display and contains application quick launch buttons

About Navigation

The application provides you with several ways to display the results:

- The drop-down menus available in the menu bar allows for screen configuration (one, two, or four plots, summary or full numeric results table)
- The buttons in the tool bar allow for screen configuration
- The drop-down menus available in the plot display windows allow you to choose from the available plots, as well as Copy, Examine, and Export plots
- The status bar at the bottom of the screen contains progress information and displays error conditions detected
- Double clicking on a displayed graph opens the plot in a MATLAB window. MATLAB provides additional display capabilities such as panning, zooming, data cursors, and 3D rotation. The Examine... button from the drop-down menu of the plot also opens the MATLAB window.



See also:

[Windows User Interface \(see page 17\)](#)



[About the 80SJNB Toolbar \(see page 20\)](#)



[About Configuring the Application for Analysis \(see page 23\)](#)

About the 80SJNB Tool Bar


The toolbar provide quick access to most of the functions you need to configure the settings, start the acquisition, and control the numerical and plot displays. Most tasks are also available using the drop-down lists from the File menu bar.



- Acquisition button  Use the Acquisition button to select and configure the source for measurements and control key oscilloscope setups. Any change in the Acquisition settings clears all the data. The Acquisition button is disabled during the acquisition and processing cycle.
- Signal Path button  Use the Signal Path button to define the signal path characteristics to simulate the actual conditions your signal may encounter. Changes made in the signal path settings does not clear the data, only the results. The Signal Path button is disabled during the acquisition and processing cycle.

- Analysis Setup button . Use the Analysis Setup button to change settings that affect how measurements are made and displayed. Changes made in the analysis settings does not clear the data, only the results. The Analysis Setup button is disabled during the acquisition and processing cycle.
- Free Run on/off button . Use the Free Run button to select the sequence mode (free run on or off).


When OFF, the button remains blue and the acquisition and processing cycle completes one pass over the entire pattern. Off is the default mode.


When Free Run is ON, the button turns green  indicating that the acquisition and processing cycle repeats until stopped. The correlated components are averaged with previous data while the uncorrelated components are accumulated for increased statistical content. At the completion of each acquisition cycle, the plots and measurements are updated.


Free Run mode is recommended when:




there is a doubt that one acquisition cycle is sufficient. A change in the results indicate that additional acquisition cycles was needed.



the correlated waveform shows irregular disturbances. It is possible that uncorrelated information can leak into the single-pass correlated filtering. In this case, additional acquisition cycles will help.

If you want to halt a Free Run cleanly, deselect the  button. This converts the Free Run mode back to Single Sequence mode, so that the acquisition stops when the cycle is complete.

- Run button . Use the Run button to start the acquisition and processing cycle. Once the run button is pressed, do not change any instrument settings. When the Run button is pressed, all current measurement data and plot displays are cleared. During the acquisition and processing cycle, the Signal Path, Analysis, Acquisition, and Run buttons are disabled.

During the acquisition and processing cycle, the Run button is replaced with the Pause button . Press Pause to interrupt the current acquisition and processing cycle. Press the button again to resume the cycle. This can be useful when the acquisition is set to Free Run, allowing you to halt the acquisition and processing cycle so you can view and save the measurement data between cycles.

- Stop button . Use the Stop button to end the acquisition and processing cycle. While in Single Sequence mode, stopping the cycle produces no results and you must press the Start button to start a new cycle.
- Clear Data button . Use the Clear Data button to clear all results and plot displays. If Free Run is set to ON (cumulating previous data with new), you can clear the existing results and plots during the processing cycle, thus starting a new acquisition and processing cycle.
- Plot Display . Use the window pane buttons to display between 1, 2, or 4 plots. The number of plot displays can be changed at any time.

- **Numeric Results Display**  The results button changes the display to a complete list of statistics with no plots displayed. If the application is displayed on a secondary, larger screen, the numeric results display shows all the results at once.
- **Return to Scope**  Use this button to bring the TekScope display to the front of the screen.

See also:

[About Configuring the Application for Analysis \(see page 23\)](#)

[About Analysis Settings \(see page 40\)](#)

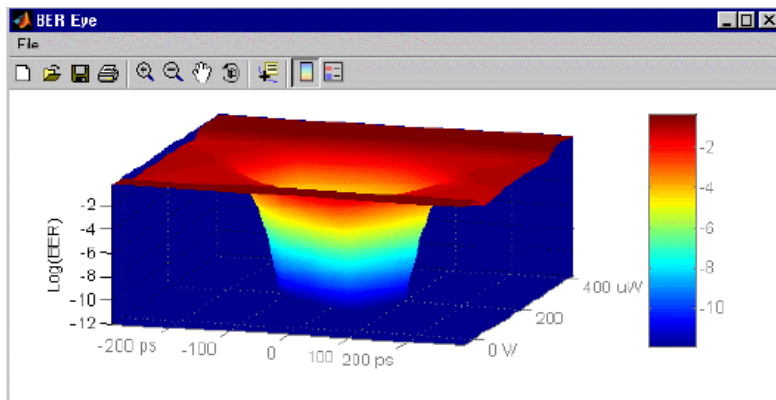
MATLAB® User Interface

The 80SJNB application includes MATLAB plots to provide further data analysis and visualization of the plot displays.




MATLAB provides multiple capabilities to display and annotate the plot diagrams, including:

- Pan and Zoom
- 2D and 3D visualization
- Rotation
- Data Cursors
- Color enhancements


MATLAB is a product distributed by MathWorks. You can view the MATLAB documentation and tutorials on their Web site: <http://www.mathworks.com>




About Configuring the Application for Analysis

The tool bar provides an [Acquisition \(see page 23\)](#) button  to configure the application to acquire data, a [Signal Path \(see page 30\)](#) button  to set signal path conditions, and an [Analysis \(see page 40\)](#) button  to change settings that affect how measurements are made and displayed.

NOTE. *The Acquisition settings must be set prior to starting an acquisition cycle. The Signal Path and Analysis settings can be modified without the need to reacquire data.*


Use the Sequence button  to have the acquisition and processing of data run continuously (free run) or stop after one cycle is complete.

After setting up the application, you can select the Run button  to start the acquisition and processing cycle.

After the acquisition and processing cycle has completed, you can view the results as [numerical \(see page 46\)](#) statistics or [graphically \(see page 17\)](#).

About Acquiring Data

Before making jitter and noise measurements, you need to select and configure the signal source.

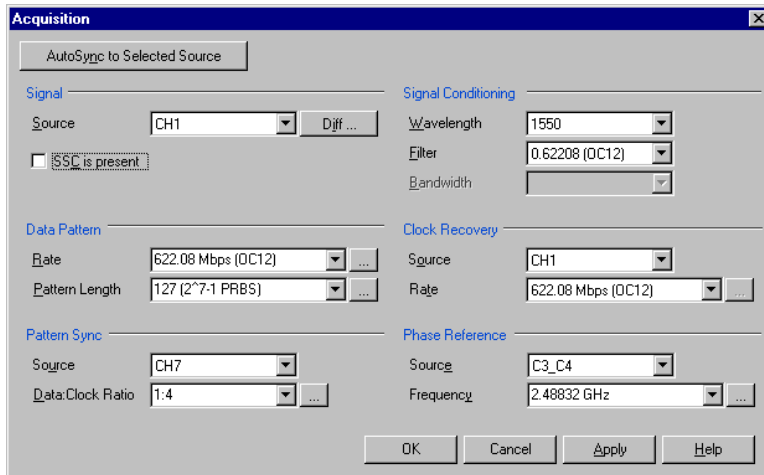
Use the Acquisition button  to display the Acquisition dialog box.

In the Acquisition dialog box, select the signal source and define the acquisition parameters. Some parameters (such as the Clock Recovery, Phase Reference Sources, and the optical signal conditioning) are copied from the oscilloscope state.

Press the AutoSync to Selected Source button to have the 80SJNB application automatically obtain and enter the following information from the signal applied to the channel defined as the Signal Source:

- Data Pattern Rate
- Data Pattern Length
- Data:Clock Ratio (e.g. for 10 Gb/s, this would be 10 GHz)

NOTE. We recommend running this functionality in the oscilloscope (the equivalent menu exists there in "Setup->Trig->PatternSync"). The important difference is that the oscilloscope UI/PI allows pre-filling some of the parameters of the AutoSync, which dramatically improves the success rate of AutoSync. For example pre-filling the Data Pattern Length, and then unchecking it from the AutoSync search, makes the data pattern length much more likely to succeed. Refer to the TekScope online help for details about the Pattern Sync settings.



See also:

[Selecting the Source \(see page 27\)](#)

[Selecting the Data Pattern \(see page 25\)](#)

[Selecting the Pattern Sync \(see page 26\)](#)

[Selecting the Signal Conditioning \(see page 26\)](#)

[Selecting Clock Recovery \(see page 24\)](#)

[Selecting Phase Reference \(see page 25\)](#)

[Analysis Settings \(see page 40\)](#)

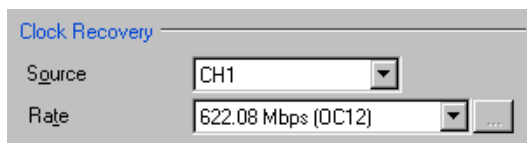
Selecting Clock Recovery

The PatternSync Trigger module requires a data synchronous clock input. When using a clock derived from a module installed in the oscilloscope that provides a clock recovery output (such as the 80A05), use this dialog box to select the channel source and its frequency.

If using an external clock recovery source (other than a module installed in the oscilloscope such as an 80A07), you should set the Source to None.

These settings are grayed out if no modules with clock recovery are detected at application startup.

The Rate setting is limited to the capabilities of the selected module. The numeric keypad is unavailable for use unless the module is capable of USER defined rates.



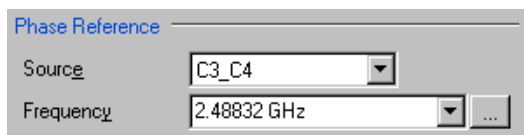
Selecting Phase Reference

You can use a Phase Reference module (such as the 82A04) to reduce the trigger jitter of the signal source, thus increasing the jitter measurement accuracy. If analyzing a signal using Spread Spectrum Clocking (SSC), a Phase Reference module is required.

If using a Phase Reference module, set the channel source and the frequency of the applied clock.

These settings are grayed out if a Phase Reference module is not detected at application startup. If a Phase Reference module is detected, you have the option to not use the module by selecting None as the Source.

TIP. *Selecting a Phase Reference module dramatically improves the accuracy of DDJ (Data Dependent Jitter) and the correlated waveforms. However, the throughput is lowered in this mode.*



NOTE. *When using a recalled data file, the Phase Reference Frequency field is updated to indicate the frequency when the data was acquired. The Source field remains unchanged regardless if phase reference was used when the recalled data file was created.*

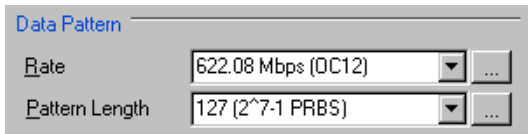
Selecting the Data Pattern

Defining the Data Pattern requires that you define both the data rate of the signal source and the pattern length in bits. You can choose the data rate from a predefined set of lengths or enter a value with the numeric keypad.

NOTE. Selecting a data rate that does not match the communication standard that is set in the instrument's Horizontal Communication Standard setting dialog box causes the oscilloscope setting to change to User.

When selecting the pattern length, only the length is important. The precise bit sequence is unimportant as long as it is repetitive.

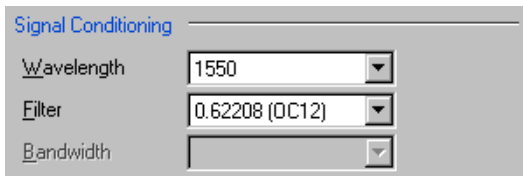
To analyze a clock pattern, select a 2 bits pattern (or a multiple). The analysis is performed on both edges.



NOTE. When using a recalled data file, the Data Pattern fields are updated to indicate the state of the settings when the data was acquired.

Selecting the Signal Conditioning

Use this control to select what type of filtering, if any, you want performed on the selected channel. The available filters depend on the capabilities of the module.



If the Filter is set to None, you can use the Bandwidth box to select the bandwidth of the channel. The available bandwidth selections depend on the capabilities of the module. Refer to the documentation for the module about its filter or bandwidth settings.

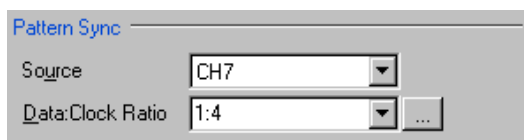
Selecting the Pattern Sync

The Pattern Sync area is where you set the location of the PatternSync Trigger module and the data-to-clock ratio.

Upon starting the 80SJNB application, the Sync Source is preset to the first location (lowest numbered channel) of an installed PatternSync Trigger module.

The default value for the data-to-clock ratio is 1:1. The first value represents the data rate and the second value represents the clock rate. The Data to Clock valid rates range from 128:1 to 1:8, with one of the references values always being 1.

NOTE. *The data-to-clock ratio is frequently a source of problems because data+clock sources often use inconsistent definitions of the clock rate. Consider using AutoSync function (in the oscilloscope menu) to set this ratio.*



Selecting the Source

The application takes measurements on waveforms specified as sources (also called signal sources). The source can be a channel (CH1 through CH8), a math waveform (if one has been defined). Any defined math waveform can be used, whether it's defined in the 80SJNB configuration as a differential setup or in the TekScope application. (Defining a math waveform in the TekScope application must be done before launching the 80SJNB application.)

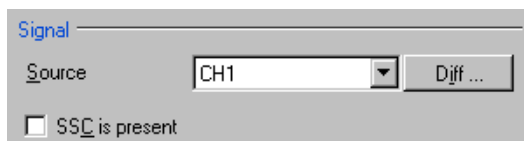
When selecting a Data Source, all other channels and Math waveforms should be turned off. If any channels or Math, other than the Data Source are activated after launching the 80SJNB application, an error message will prompt you to deactivate all additional waveforms before starting the acquisition and processing cycle. All other waveform databases, measurements, histograms and masks on the oscilloscope need to be turned off, as well. If any of these conditions exist when starting the acquisition and processing cycle, you will be prompted to turn these off before you can continue.

If your signal source uses Spread Spectrum Clocking (SSC), select the checkbox so that the application can make accurate measurements accounting for clock rate modulation.

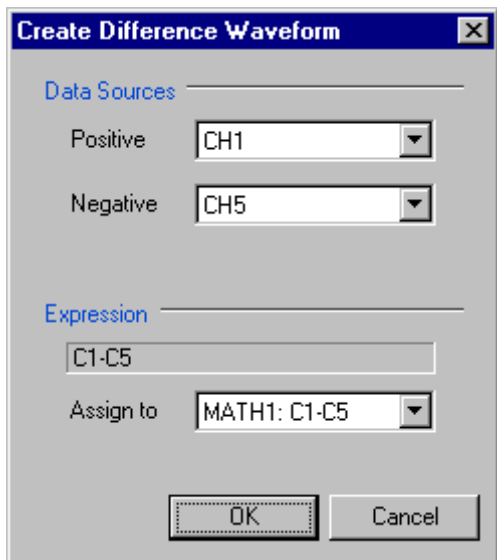
NOTE. *If a saved data file has been recalled, the signal source selection remains unchanged but all result panels will indicate the recalled data file as the source. The "SSC is present" field is updated to match the setting from the recalled data file.*

See also:

[About Spread Spectrum Clocking \(SSC\) \(see page 28\)](#)



Selecting the **Diff ...** button displays the dialog box to create a differential Math waveform by defining a positive and negative waveform source (the negative waveform source is subtracted from the positive waveform source). This generates a single mathematical waveform that the 80SJNB application can use as the waveform measurement source.



TIP. More complex math expressions are available using the TekScope math dialog box. Refer to the oscilloscope's online help. These must be defined before launching the 80SJNB application.

About Spread Spectrum Clocking (SSC)

Spread Spectrum Clocking (SSC) is the technique of modulating the clock frequency to minimize EMI effects. SSC affects the analysis process and the results of jitter, noise and BER measurements. If SSC is not corrected for its effects, the results show as a large amount of periodic jitter components that will be reflected in the total jitter and noise, and ultimately in the BER estimates.

When SSC is present, 80SJNB measures the attributes of SSC and corrects the results.

Configuration Requirements

If using clock recovery, the clock recovery unit must be able to handle SSC. Use a Tektronix 80A07 clock recovery unit if SSC is present in the signal.

The TekScope needs to have an 82A04 Phase Reference Module installed. The module minimizes the effect of the SSC on the data by sampling synchronously the data and clock. In addition, by acquiring the

clock in the 82A04 module, 80SJNB characterizes the SSC present in the clock and uses that information to correct the jitter, noise, and BER measurements performed on the data.

TIP. *If no Phase Reference module is available in the instrument, the “SSC is present” check box is disabled.*

In order to optimize the phase correction, the following configuration is recommended:

Data rate range	Clock recovery frequency (80A07)	Clock recovery output rate (80A07) ¹	Data-to-clock ratio (JNB)	Phase reference frequency (JNB)
500 Mbps – 1 Gbps	Data Rate * 4	Standard	1:4	Data Rate * 4
1 Gbps – 2 Gbps	Data Rate * 2	Standard	1:2	Data Rate * 2
2 Gbps – 4 Gbps	Data Rate	Standard	1:1	Data Rate
4 Gbps – 8 Gbps	Data Rate	Subrate (1/2)	2:1	Data Rate/2
8 Gbps – 12.5 Gbps	Data Rate	Subrate (1/4)	4:1	Data Rate/4

¹ Note that the Clock Recovery unit clock output is either Standard or Subrate Clock.

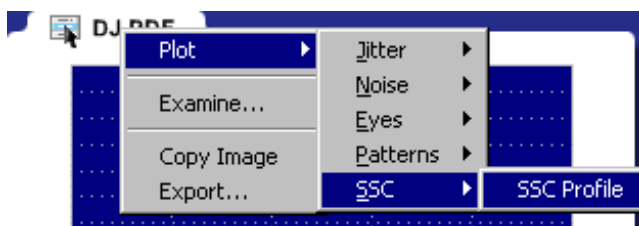
When you instruct 80SJNB that the data has SSC (by checking the “SSC is present” check box), the following constraints are enforced based on the current Data Rate:

- Phase Reference source is selected.
- Phase Reference frequency is set to the recommended value in the table *Configuration Settings for SSC*.
- Data-to-Clock ratio for the Pattern Sync module is set to the recommended value in the table *Configuration Settings for SSC*.

NOTE. *Changes to the Data Rate are reflected in the Phase Reference Frequency and Data-to-Clock Ratio. You must make the appropriate changes to the Clock Recovery unit.*

The status (on or off) of the SSC setting is displayed in both the Summary – SSC view and the Full Numeric Results page. The results of the SSC analysis are presented in two forms, numeric results and a plot. When viewing the full numeric results table, the SSC Modulation section has two fields: Magnitude and Frequency. Magnitude represents the depth of the SSC clock modulation in parts-per-million (ppm) and Frequency reflects the SSC modulation frequency.

To view the plot of the SSC modulation profile, select the Plot>SSC>SSC Profile.



TIP. *The configuration settings are also available through the GPIB programming interface of the oscilloscope. Refer to the information provided with the oscilloscope.*

About Signal Path Settings

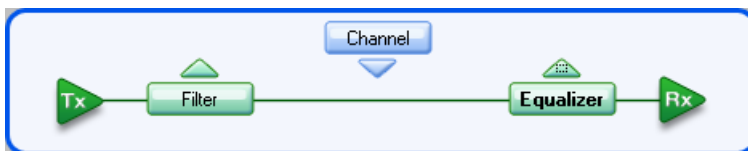
The Signal Path Settings are available for use with the 80SJNB Advanced version. If you are using the 80SJNB Essentials version, you're allowed to use the dialog boxes but are not allowed to place any of the functions into the signal path.

The Signal Path settings allow you to emulate the environment your signal encounters, all the way from the transmitter to the receiver. With the Signal Path dialog box, your signal path is represented by a line from the transmitter (Tx) to the Receiver (Rx). Along this line, you have the ability to emulate an arbitrary filter and/or a channel. You can then define an equalizer to compensate for the effects the filter and channel introduce.



Selecting a signal path arrow (Filter, Channel, or Equalizer) inserts or removes the function from the signal path. When inserting a function into the signal path, its dialog box automatically displays.

Selecting a signal path button (Filter, Channel, or Equalizer) displays that function's dialog button without inserting or removing the function from the signal path.



By simulating the signal environment, you can effectively emulate probing the signal at the receiver rather than the output of the transmitter. With the use of the Equalizer, you can then design compensations to improve the signal quality at the receiver.

TIP. *You can move a function in and out of the signal path without affecting any settings.*

To learn more about each of the signal path settings, select the following:

[Filter \(see page 31\)](#)

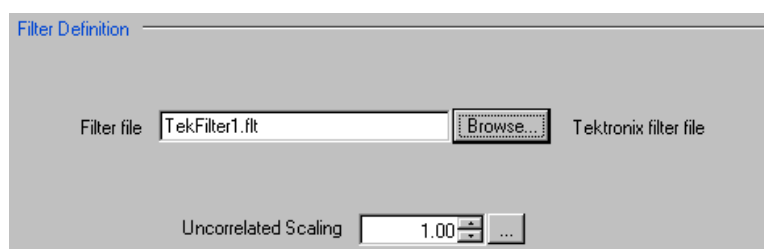
[Channel \(see page 31\)](#)

[Equalizer \(see page 34\)](#)

Setting Filter Conditions

The Signal Path Filter allows you to specify an arbitrary linear FIR filter to be applied to the acquired data pattern. For instance, the transmitter may artificially enhance the signal at certain frequencies to overcome known problems in the channel. You can use a filter to emulate this action or compensate for transmitter signal pre-emphasis.

To use the filter, move the Filter function into the signal path and use the Filter file box or browse button to specify the filter file. The default location for the filter files is in the Windows/My Documents folder. A few filter files are provided as examples but you are responsible for providing the filter files.



See [Uncorrelated Scaling \(see page 39\)](#) for information about this setting.

The following is an example of the filter file format:

```
# This is a sample filter file. The '@' indicates it is valid for all frequencies.
# Up to 2000 coefficients may be specified.
@ 5.7e-005, 2.4e-005, 5.4e-005, 2.1e-005, 5.1e-005
```

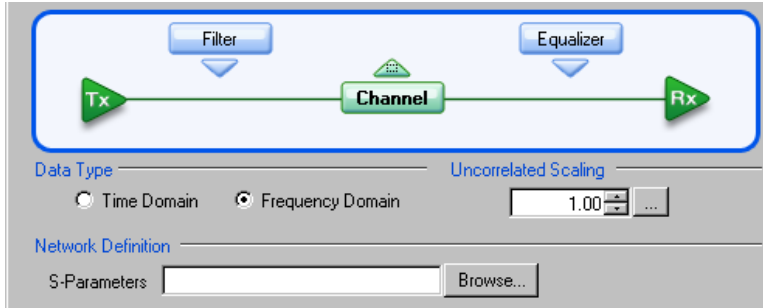
Setting Channel Conditions

The Signal Path Channel allows you to emulate the channel (interconnect or lane) carrying the signal. There are two ways to define the channel, with [Time Domain \(see page 33\)](#) waveforms and [Frequency Domain \(see page 31\)](#) S-parameters.

See [Uncorrelated Scaling \(see page 39\)](#) for information about this setting.

Frequency Domain

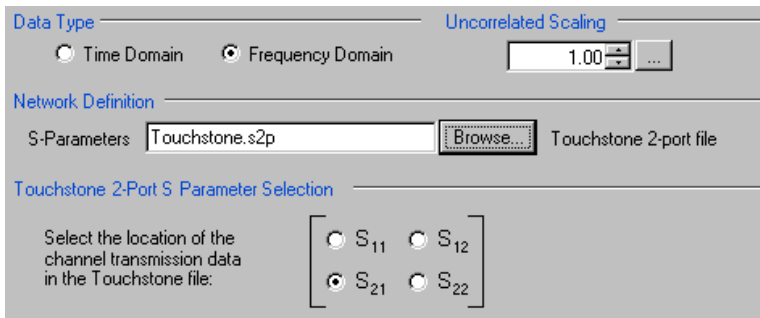
With Frequency Domain selected, the channel is defined with an S-parameters file. Use the file selection box or Browse button to select the file. The default location for the files are in the Windows/My Documents folder. You are responsible for providing the S-parameters file.



The S-parameters file can contain data for 1-port, 2-port, or 4-port devices. Once a file is selected, the application reads its contents and generates the appropriate dialog for you to select the particular S-parameter in the file to use.

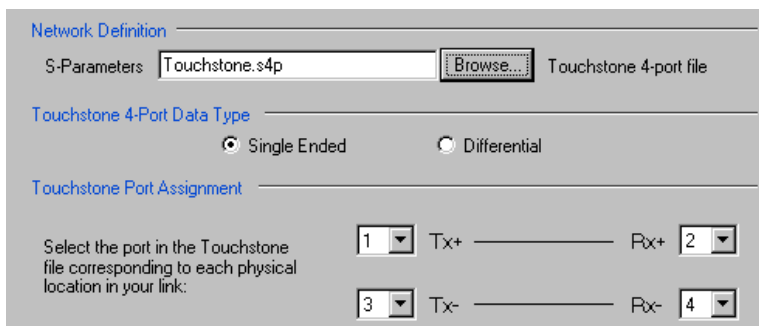
1-Port. Files with 1 port of data contain only 1 S-parameter so they do not require any further input. These files may be IConnect 1-port files or Touchstone 1-port files.

2-Port. Files with data for 2 ports contain 4 S-parameters as a 2x2 matrix. These are Touchstone 2-port files. When the application recognizes such an S-parameter file, a dialog is created for you to select the S-parameter representing channel transmission. The typical selection is S_{21} , and is the default selection, but this may need to be changed if the file contains a 2x2 subset of the 4x4 matrix of S parameters defining a 4-port system.

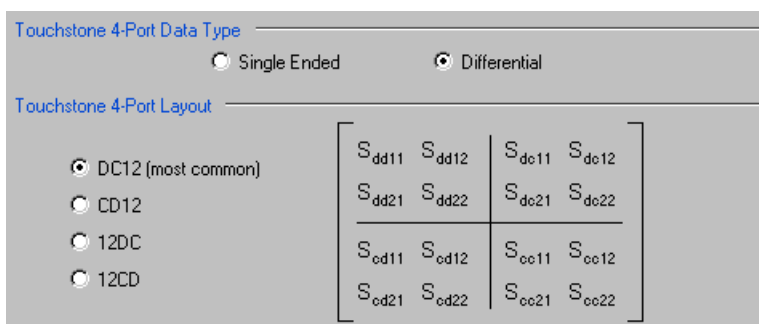


4-Port. Files with data for 4 ports may contain single-ended or mixed-mode data. These are Touchstone 4-port files.

If the data is single ended, you must map the port numbers as used in the file to physical locations in your link. A default mapping is assumed. The application will use this mapping to compute the S_{dd21} parameter (for transmission of a differential signal) from the appropriate four S-parameters measured using single ended data.



If the data is mixed mode, you must select the data layout in the file. The most common layout is DC12 and is the default selection. The application always uses the S_{dd21} parameter for computing the transmitted waveform no matter which mapping is selected.



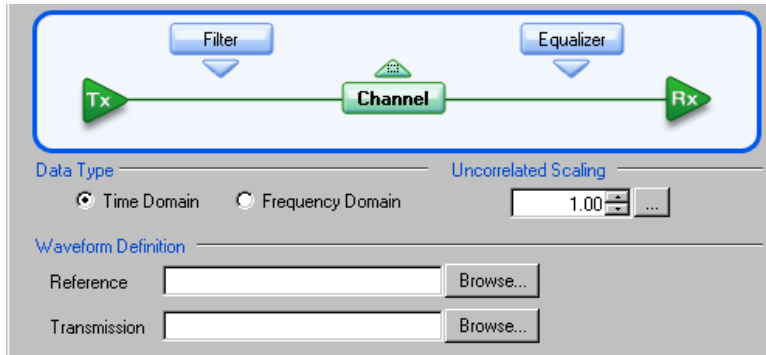
NOTE. 80SJNB Advanced uses the 'insertion loss' information only.

Time Domain

With Time Domain selected, the channel's behavior is generated from a Reference waveform and a Transmitted waveform. Use the file boxes or browse buttons to select the files you want to use. The default location for the files is in the Windows/My Documents folder. You are responsible for providing the time domain waveform files.

NOTE. We recommend that the waveform file be a measurement of the channel from a Tektronix TDR/TDT system. The raw oscilloscope waveform is all that is needed. The measurement can be of:

- a. A reference throughput (no DUT is inserted, just a throughput connection between the TDR step source and the acquisition channel on the TDT end).
 - b. A DUT throughput measurement (the TDR step source and the TDT acquisition channel are connected through the DUT).
-

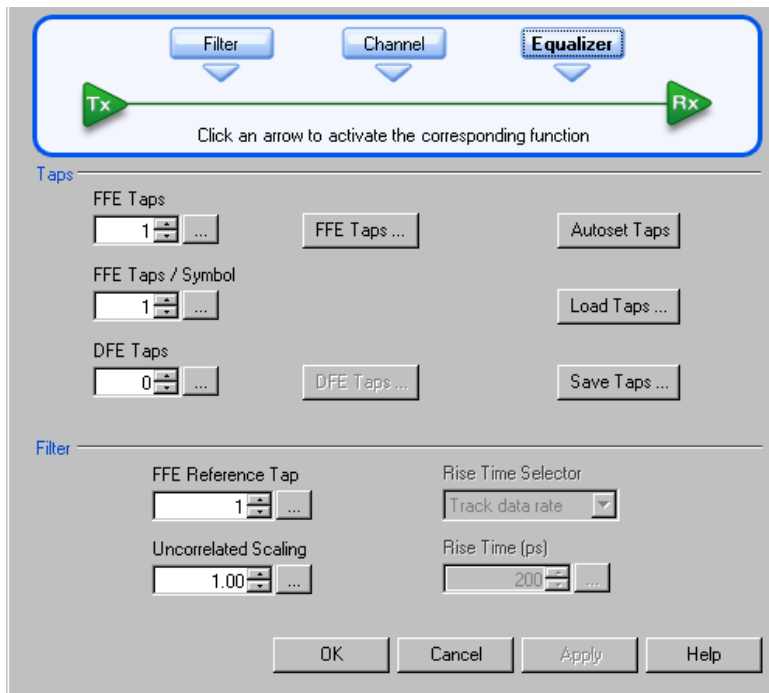


About the Equalizer

The equalizer compensates for transmission channel impairments in the form of frequency-dependent amplitude and phase distortions resulting in intersymbol interference (ISI) in the communication data stream.

80SJNB provides tools to define an equalizer by a set of Taps or weights. The linear feed-forward equalizer (FFE) is defined by a user specified number of taps, taps per symbol (or unit interval), and the weight of each tap. The equalizer becomes a decision-feedback equalizer (DFE) when the number of DFE taps is set to a number larger than 0.

NOTE. *Tap values and weights are used interchangeably.*



To learn about setting up the Equalizer, see:

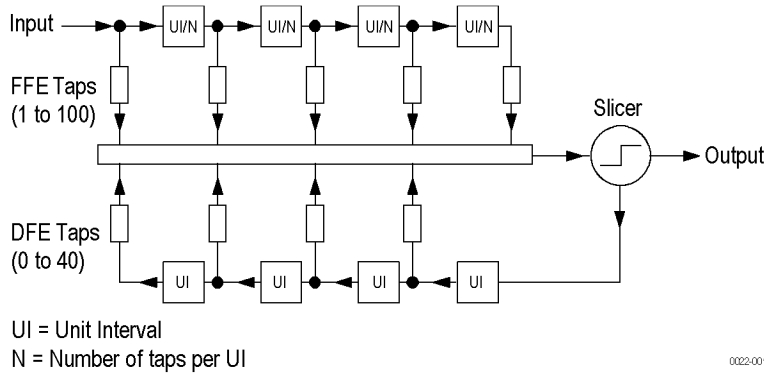
[Equalizer Taps \(see page 35\)](#)

[Uncorrelated Scaling \(see page 39\)](#)

Equalizer Taps

The behavior of the equalizer is controlled by the number of taps and the tap values. Using the equalizer requires that you specify the number of FFE and DFE taps, as well as the FFE spacing of the taps. You can also incorporate an equalizer filter delay by specifying a reference tap to compensate for pre-cursor channel effects.

FFE and DFE tap values can be specified by you or computed automatically by the application using the Autoset Taps button.



[Go to FFE Taps description \(see page 36\)](#)

[Go to DFE Taps description \(see page 37\)](#)

FFE Taps

The FFE Taps are weights applied to a set of samples taken from the data stream to compensate for channel impairments manifested in the form of ISI. The number of FFE Taps represent the length of history in data samples that contribute to the computation of a current bit. Data stream samples could be distanced at unit intervals, in which case the number of FFE taps represents the number of preceding bits that contribute to the correction of the current bit. Alternatively, the data stream could be sampled at a higher rate per bit, yielding a fractionally-spaced FFE tap set.

The number of FFE taps defaults to 1, with the capability to specify up to 100 taps. The default FFE tap spacing is at unit intervals and up to 10 taps per symbol can be configured.

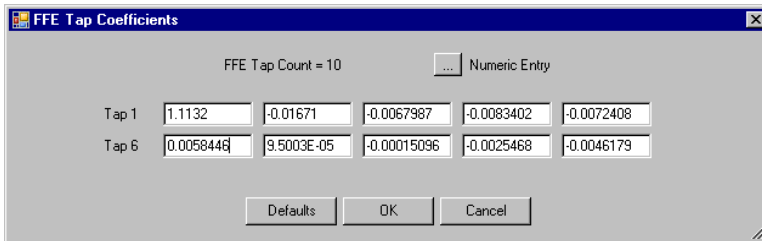
The FFE Tap values could be specified by you using the FFE Taps... dialog, or computed by the application with the Autaset Taps button.

[Go to Autaset Taps description \(see page 38\)](#)

[Go to Saving and Loading Taps \(see page 39\)](#)



Pressing the FFE Taps... button displays a dialog showing the current FFE tap values. You can specify each FFE tap coefficient individually. Pressing the Defaults button sets the first FFE tap to 1 and the rest to 0.



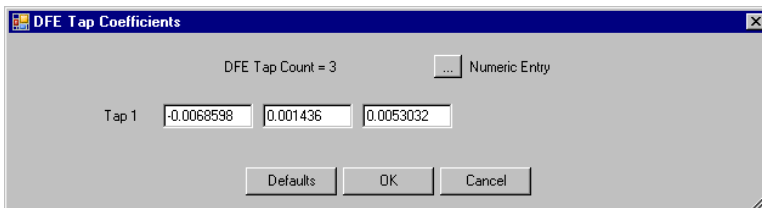
You can use the Save Taps button to save a set of coefficients to a file. Previously saved Tap files can be recalled using the Load Taps button.

DFE Taps

DFE taps are weights applied to the previous digital decisions made by the slicer (comparator + latch). The number of DFE Taps specifies the number of bits contributing to the current input to the slicer. The default number of DFE Taps is 0, in which case the equalizer is a linear FFE one. The maximum number of DFE Taps is 40. Weights are scalars specified by you or computed by the Autoset Taps function.

See [Autoset Taps \(see page 38\)](#) for a description about using the autoset taps function.

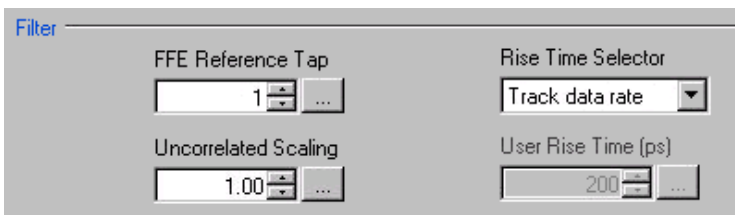
Pressing the DFE Taps... button displays a dialog showing the current DFE tap values. You can specify each DFE tap coefficient individually. Pressing the Defaults button sets all DFE tap values to 0.



You can use the Save Taps button to save a set of coefficients to a file. Previously saved Tap files can be recalled using the Load Taps button.

TIP. *When using the Equalizer, you are required to always have at least 1 FFE tap. DFE taps are optional.*

Filter



FFE Reference Tap. The FFE Reference Tap is a filter delay in unit intervals that should be set to compensate for the delay between the transmitter output and the equalizer input. The value of the Reference Tap is constrained by the number of FFE Taps and the number of taps per symbol.

Rise Time Selector. The Rise Time Selector specifies the Gaussian filter used to emulate the DFE feedback path's band-limited behavior. The rise time defaults to Track Data Rate, in which the configuration is set to 1/5 of the unit interval equivalent with the data rate. Track tap interval designs a Gaussian filter with a rise equal to 1/5 of the spacing between taps. Selecting User allows you to specify the rise time from 1 ps to 4 ns.

Uncorrelated Scaling. See [Uncorrelated Scaling \(see page 39\)](#) for a description of this control.

Autoset Taps

The tap autoset function computes a set of tap values that optimize the eye opening for the data pattern applied to the input of the equalizer. If the DFE tap number is 0, the algorithm yields an optimal set of FFE taps, while if the equalizer is specified as a DFE by a positive DFE tap number, the Autoset Taps algorithm jointly optimizes the forward and feedback loop tap coefficients. The optimization algorithm is the least-mean-square error (LMS) and the optimization targets the signal to noise ratio at the sampling phase.

The Autoset Taps will account for the FFE Taps/Symbol and Reference Tap specifications.

The autoset algorithm assumes the availability of a training sequence, thus it supports only a known set of patterns: PRBS3 to PRBS15 with the following generator polynomial equations:

$$\text{PRBS3: } x^3+x^2+1$$

$$\text{PRBS4: } x^4+x^3+1$$

$$\text{PRBS5: } x^5+x^4+x^2+x^1+1$$

$$\text{PRBS6: } x^6+x^5+x^3+x^2+1$$

$$\text{PRBS7: } x^7+x^6+1$$

$$\text{PRBS8: } x^8+x^7+x^3+x^2+1$$

$$\text{PRBS9: } x^9+x^5+1$$

$$\text{PRBS10: } x^{10}+x^7+1$$

$$\text{PRBS11: } x^{11}+x^9+1$$

$$\text{PRBS12: } x^{12}+x^9+x^8+x^5+1$$

$$\text{PRBS13: } x^{13}+x^{12}+x^{10}+x^9+1$$

$$\text{PRBS14: } x^{14}+x^{13}+x^{10}+x^9+1$$

$$\text{PRBS15: } x^{15}+x^{14}+1$$

The tap autaset algorithms computes a set of FFE and DFE taps using a least-mean-square optimization algorithm. The optimization algorithm is the least-mean-square error (LMS) and the optimization targets the signal to noise ratio at the sampling phase.

NOTE. *You can autaset tap values even if the Equalizer is not inserted in the signal path.*

Saving and Loading Taps

Use these controls to save or load a set of taps from a file. The browse directory defaults to Windows/My Documents and the file extension is .tap.

The file format is the following:

```
<Tektronix>
  <TapFile>
    <FFE>
      <TapsPerSymbol>value<\TapsPerSymbol>
      <ReferenceTap>value<\ReferenceTap>
      <Tap1>value<\Tap1>
      <Tap2>value<\Tap2>
      ...
      <Tapn>value<\Tapn>
    </FFE>
    <DFE>
      <Tap1>value<\Tap1>
      <Tap2>value<\Tap2>
      ...
      <Tapn>value<\Tapn>
    </DFE>
  </TapFile>
</Tektronix>
```

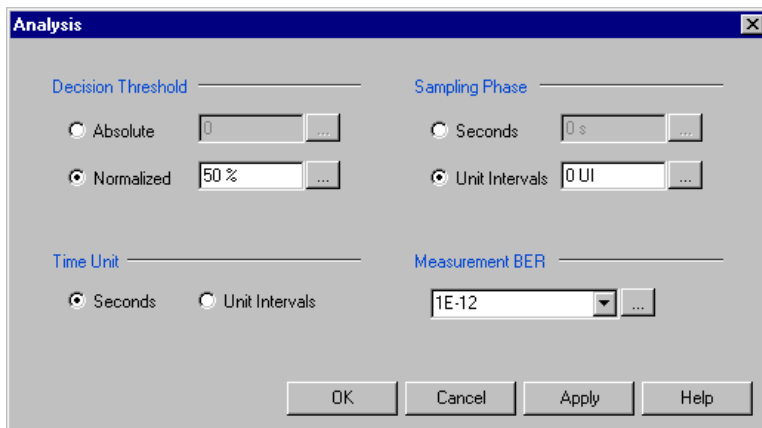
Uncorrelated Scaling

The signal path settings (Filter, Channel, Equalizer) each have an uncorrelated scaling setting. The Uncorrelated Scaling value multiplies the uncorrelated random noise RMS value. Uncorrelated noise scaling affects the uncorrelated jitter as projected through the average slew rate. 80SJNB Signal Path does not process uncorrelated noise in any other way.

NOTE. *The overall Signal Path uncorrelated scaling factor is the product of all signal path uncorrelated scalar values of the active functions.*

About Analysis Settings

The Analysis settings affect how measurements are made and displayed. The settings are saved with the 80SJNB application whenever it is closed so that restarting the application results in using the same settings.



TIP. *Changes to Analysis settings are reflected in the current plots and results.*

Setting the Decision Threshold

The Decision Threshold specifies the level at which to determine the crossing points on the edges of the measured waveform.

When set to Absolute, the decision threshold uses the absolute value provided in volts (electrical) or watts (optical).

When set to Normalized, the decision threshold is calculated based on waveform data according to the percent value of the signal amplitude.

Setting the Time Unit

The Time Unit sets the units (Seconds or Unit Intervals) used when displaying the measurement results.

Setting the Sampling Phase

The Sampling Phase determines where the sampling point is located within the bit interval.

When set to Seconds, the sampling point uses the absolute value entered. Zero seconds is at the center of the bit interval.

When set to Unit Intervals, the sampling point is calculated based on the bit interval. Zero UI is the center of the unit interval.

Setting the Measurement Bit Error Rate

The Measurement BER determines the rate for which the measurements are predicted.

About Displaying Measurements

You can use the tool bar to select how the results are displayed: numeric results, plots (up to four), or a combination.

What do you want to do?

[Display the definitions of Jitter measurements \(see page 41\)](#)

[Display the definitions of Noise measurements \(see page 42\)](#)

[Measurement Algorithms \(see page 89\)](#)

[Go to Working with Numeric Results \(see page 46\)](#)

[Go to Working with Plots \(see page 48\)](#)

Jitter Measurement Definitions

Jitter measurements	Description
Random Jitter	
RJ (RMS)	Measured Random Jitter
RJ(h) (RMS)	Horizontal component of random jitter
RJ(v) (RMS)	Vertical component of random jitter induced by noise converted to jitter through an average slew rate
Deterministic Jitter	
DJ	Measured Deterministic Jitter
DDJ	Data Dependent Jitter

Jitter measurements	Description
DCD	Duty Cycle Distortion
DDPWS	Data Dependent Pulse Width Shrinkage
PJ	Measured Periodic Jitter (peak-to-peak)
PJ(h)	Horizontal component of periodic jitter (peak-to-peak)
PJ(v)	Vertical component of periodic jitter (peak-to-peak) induced by noise converted to jitter through an average slew rate
Total Jitter @ BER	
TJ (1E-12)	Total Jitter at user-specified BER
Eye Opening (1E-12)	Horizontal Eye Opening at user specified BER

Dual Dirac Measurement Definitions

Dual Dirac	Description
RJ(d-d)	Random Jitter computed in the Dual Dirac model
DJ(d-d)	measurementsDeterministic Jitter computed in the Dual Dirac model

Noise Measurement Definitions

Noise measurements	Description
Random Noise	
RN (RMS)	Measured Random Noise
RN(v) (RMS)	Vertical component of random noise
RN(h) (RMS)	Horizontal component of random noise induced by jitter converted to noise through an average slew rate
Deterministic Noise	
DN	Measured Deterministic Noise
DDN	Data Dependent Noise
DDN(level 1)	Data Dependent Noise on logical level 1
DDN(level 0)	Data Dependent Noise on logical level 0
PN	Measured Periodic Noise
PN(v)	Vertical component of periodic noise (peak-to-peak)
PN(h)	Horizontal component of periodic noise (peak-to-peak) induced by jitter converted to noise through an average slew rate
Total Noise @ BER	
TN (1E-12)	Total Noise at user-specified BER

Noise measurements	Description
Eye Opening (1E-12)	Eye Opening at user-specified BER
Eye Amplitude	The amplitude of the eye computed as the mean-to-mean of logical 1 and logical 0 bit levels sampled at the user defined Sampling Phase.

SSC Modulation Measurement Definitions




SSC modulation measurements	Description
Magnitude	Spread spectrum clock modulation magnitude of the clock in parts-per-million (ppm) units.
Frequency	Spread spectrum clock modulation frequency.

About Taking Measurements


You should return the oscilloscope to its default state before launching the 80SJNB (acquisitions and math waveforms should be off, as well as all measurements, waveform databases, masks, and histograms). You should not have to make changes to the oscilloscope settings via the oscilloscope UI to successfully acquire data with the 80SJNB application. The most relevant oscilloscope settings are accessible using the Configuration dialog box of the 80SJNB application.



Steps to Acquire Data


To acquire data from acquisition channels and take measurements, follow these steps:

1. Select  to display the Acquisition dialog box and configure the application according to your setup and signal type.
2. Select  to toggle the acquisition mode between free run (continuous) and single acquisitions and processing cycles. When in Free Run mode, the data correlated acquisition continues until converging (by averaging), while the uncorrelated data acquisition, processing, and accumulation of results continues until stopped.
3. Select  to start the acquisition and processing cycle.

To stop the acquisition, do one of the following:

- If you wish to stop the acquisition and processing cycle before it completes, select . This may be useful if you have started a sequence on a long waveform and then realize you would like to change the configuration.

- If you wish to interrupt the acquisition and processing cycle, select . Select a second time to resume the acquisition.
- If you wish to halt a Free Run mode cleanly, toggle the Sequence  button. This will convert the Free Run mode (indicated by the green button) to Single cycle mode (indicated by the blue button) so that the acquisition stops when the cycle is complete. Single cycle is the default mode.

TIP. Use the Clear Data  button to delete all measurement results and plots.

Saving and Recalling Setup Files

You can use the File menus to save and recall different oscilloscope and application setups. Setup files store the oscilloscope and application settings.



CAUTION. Do not edit a setup file or recall a file that was not generated by the application.

See also:

[Saving a Setup File \(see page 44\)](#)

[Recalling a Saved Setup File \(see page 45\)](#)

Saving a Setup File

To save the 80SJNB application and oscilloscope settings to a setup file, follow these steps:

1. Select File > Save Settings to open the Save dialog box.
2. In the file browser, select the directory in which to save the setup file.
3. Use the keyboard to enter a new file name.

The application appends a ".STP" extension to the name of the file.

4. Save the setup file. If the selected filename already exists, a confirmation dialog appears that allows you to cancel the operation.

NOTE. The application saves the oscilloscope setup.

Recalling a Saved Setup File

To recall the application and oscilloscope settings from saved setup files, follow these steps:

1. Select File > Recall Settings to open the Recall dialog box.
2. In the Recall dialog box, select the directory from which to recall the setup file.
3. Select a setup file name, and then select Open.



CAUTION. *Do not edit setup files. If you try to recall a setup file that has been edited, the recall operation fails.*

Saving and Recalling Data Files

You can use the File menus to save acquired data and then recall it at a later time for analysis.



CAUTION. *Do not edit a data file or recall a data file that was not generated by the application.*

See also:

[Saving a Data File \(see page 45\)](#)

[Recalling a Saved Data File \(see page 46\)](#)

Saving a Data File

To save the data acquired by the 80SJNB application, follow these steps:

1. Select File > Save Data to open the Save dialog box.
2. In the file browser, select the directory in which to save the data file.
3. Use the keyboard to enter a new file name.

The application appends a ".MAT" extension to the name of the file.

4. Save the data file. If the selected filename already exists, a confirmation dialog appears that allows you to cancel the operation.

Recalling A Saved Data File

To recall the acquisition data from saved data files, follow these steps:

1. Select File > Recall Data to open the Recall dialog box.
2. In the Recall dialog box, select the directory from which to recall the data file.
3. Select a data file name, and then select Open.

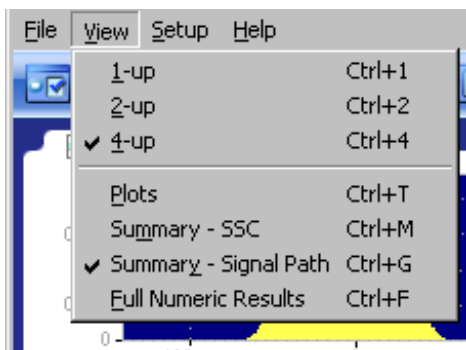


CAUTION. Do not edit setup files. If you try to recall a setup file that has been edited, the recall operation fails.

Working with Numeric Results

After an analysis is complete, you can display the results as numeric data in either a summary or detailed (full) table. Use the View menu in the file menu bar to select how to display the data. A summary of data allows room to display the plots while the full results replaces the plot display entirely.

TIP. Using a second monitor (connected to the TekScope) to display the 80SJNB application allows the numeric results display to show all results at once.



There are two views of the summary table: SSC and Signal Path. Both summary selections contain the noise and jitter measurements but not the breakdown of the measurements. The two summaries differ by displaying relevant application settings.

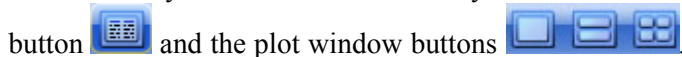
Results : 622.08 Mbps, 127 bits			
Data Source: CH3	RJ (RMS) = 2.86 ps	RN (RMS) = 676.65 uV	
Filter: gaussFilt0p5BW.ft	DJ = 111.34 ps	DN = 97.73 mV	
Channel: IB 5m Fxt SE.s4p	DDJ = 91.69 ps	DDN = 95.62 mV	
Equalizer: DFE (10/5)	PJ = 7.57 ps	PN = 2.09 mV	
Phase Reference: None	TJ (1E-12) = 145.11 ps	Eye Amplitude = 350.73 mV	
Sample Count: 52.70 k	Eye Opening (1E-12) = 1.46 ns	Eye Opening (1E-12) = 244.50 mV	

Results : 3 Gbps, 127 bits			
Data Source: CH3	RJ (RMS) = 743.60 fs	RN (RMS) = 785.51 uV	
Decision Threshold: -160.34 mV	DJ = 10.85 ps	DN = 20.44 mV	
Sampling Phase: 0 UI	DDJ = 8.43 ps	DDN = 18.65 mV	
SSC: On	PJ = 1.65 ps	PN = 1.50 mV	
Phase Reference: 3 GHz	TJ (1E-12) = 19.04 ps	Eye Amplitude = 294.24 mV	
Sample Count: 52.70 k	Eye Opening (1E-12) = 314.29 ps	Eye Opening (1E-12) = 264.26 mV	

The detailed table (when selected) expands to fill the entire screen, removing any plot displays.

Results : 3 Gbps, 127 bits		
Data Source: CH3	Data Rate: 3 Gbps	Filter: fiberFilter3.flit
SSC: On	Pattern: 127 bits	Channel: None
Phase Reference: 3 GHz	Sample Count: 52.70 k	Equalizer: DFE (14/5)
Jitter (Decision Threshold: 1.15 mV)		Noise (Sampling Phase: 0 UI)
Random Jitter		Random Noise
RJ (RMS) = 3.62 ps		RN (RMS) = 684.61 uV
RJ(h) (RMS) = 3.59 ps ?		RN(v) (RMS) = 684.61 uV
RJ(v) (RMS) = 391.79 fs		RN(h) (RMS) = 323.81 nV ?
Deterministic Jitter		Deterministic Noise
DJ = 223.71 ps		DN = 157.80 mV
DDJ = 129.98 ps		DDN = 155.52 mV
DCD = 846.37 fs		DDN(level 1) = 164.43 mV
DDPWS = 21.10 ps		DDN(level 0) = 159.88 mV
PJ = 92.98 ps		PN = 1.54 mV
PJ(h) = 92.98 ps ?		PN(v) = 1.54 mV
PJ(v) = 879.55 fs		PN(h) = 8.37 uV ?
Total Jitter @ BER		Total Noise @ BER
TJ (1E-12) = 269.41 ps		TN (1E-12) = 281.89 mV
Eye Opening (1E-12) = 63.92 ps		Eye Opening (1E-12) = 68.83 mV
		Eye Amplitude = 350.72 mV
Dual Dirac		SSC Modulation
RJ(d-d) = 4.73 ps		Magnitude = 3139 ppm
DJ(d-d) = 201.38 ps		Frequency = 30.08 kHz

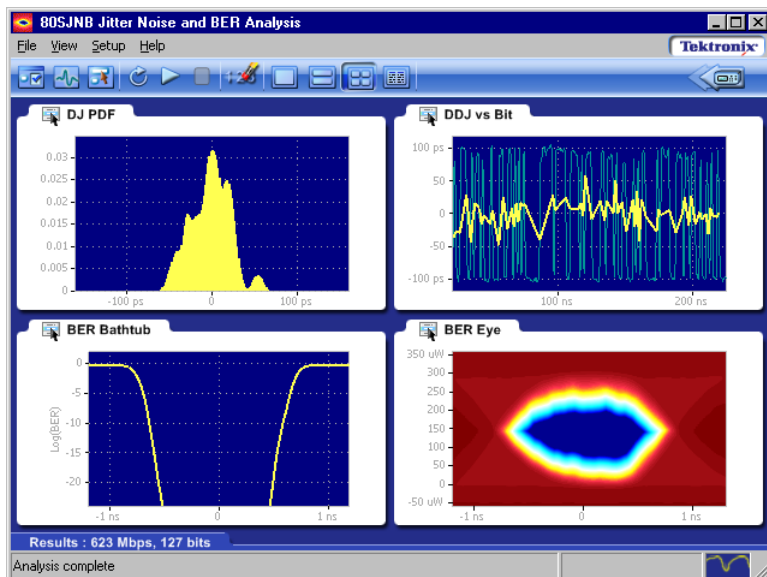
You can easily switch between summary and detailed numeric displays with the use of the numeric results



button and the plot window buttons. To hide the summary table and provide more room for the plot displays, click on the tab of the numeric data table. Clicking the tab again redisplay the summary data table.

Results : 622.08 Mbps, 127 bits	
Data Source: CH1	RJ (RMS)
Decision Threshold: 170.25 uV	DJ
Sampling Phase: 50%	DDJ

Here you can see that the plot windows fill the entire screen and the tab for the numeric details is showing at the bottom of the screen.



See also:

[Working with Plots \(see page 48\)](#)


[Noise Measurement Definitions \(see page 42\)](#)

[Jitter Measurement Definitions \(see page 41\)](#)

[Dual Dirac Measurement Definitions \(see page 42\)](#)

[SSC Modulation Measurement Definitions \(see page 43\)](#)

About Working with Plots

You can display plots in a variety of layouts using the tool bar. One, two, or four plots can be displayed using the plot display buttons  in the toolbar. When displaying plots, the results data table changes to a summary table of data. To remove the plots entirely from the display, select the Show

Numeric Results button  on the tool bar.

If the plots have been removed from the display, redisplay the plots by either selecting one of the plot display buttons or click on the tab of the data table.

See also:


[Functions in Plot Windows \(see page 49\)](#)


[About Exporting Plot Files \(see page 51\)](#)

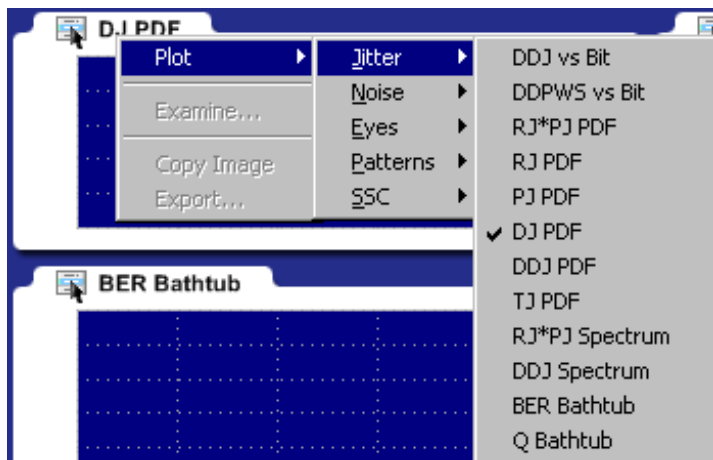
[Selecting and Viewing Plots \(see page 49\)](#)

Selecting and Viewing Plots

To select and view a plot, follow these steps:

1. Select one of the plot views , (single plot, two plots, or four plots).
2. For each plot window, select a type of plot to display. Each plot display is based on the current analysis results. Plots are updated as new results are acquired.

To select a plot type for display in the plot window, click  on the tab of the plot window. (Alternatively, you can right-click anywhere on the existing plot display.) From the drop-down menu, use the Plot menu to select a plot from the plot categories (Jitter, Noise, Eyes, Patterns, SSC).

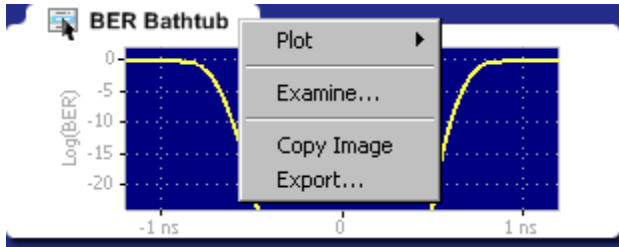


See also:

[About Exporting Plot Files \(see page 51\)](#)

Examining Plots

You can examine plots in greater detail by either double-clicking in the plot window or selecting **Examine...** from the drop-down list in the plot window. Either of these actions launches a MATLAB plot window which provides advanced tools to examine graphical displays of data.



See also:

[MATLAB User Interface \(see page 22\)](#)

Plot Type Definitions


Plot types are divided into the following categories:

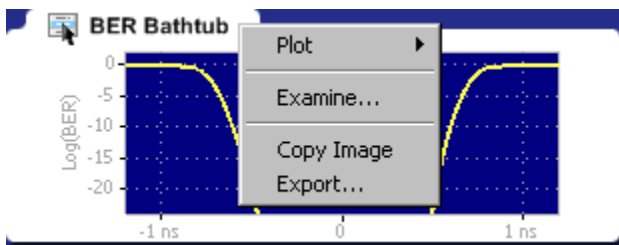
- Jitter: See [Jitter Plots \(see page 54\)](#) for a list of the types of jitter plots and their descriptions.
- Noise: See [Noise Plots \(see page 57\)](#) for a list of plot types and descriptions.
- Eyes: See [Eye Plots \(see page 55\)](#) for a list of plot types and descriptions.
- Patterns: See [Pattern Plots \(see page 57\)](#) for a list of plot types and descriptions.
- SSC: See [SSC Plot \(see page 58\)](#) for a description.

Copying Plot Images

You can copy the plot image displayed in any one of the plot windows. The copy is placed in the Windows clipboard so it can be used to paste into other Windows programs. This is convenient for creating reports and engineering records to share with others.

To create an image file of a plot, follow these steps:

1. Touch the  area of the plot window of the plot you copy. (If using a mouse attached to the instrument, right-click anywhere within the plot window of the plot you intend to copy.)
2. Select Copy Image from the drop-down list. This copies the image to the Windows clipboard.



3. Open your destination program (such as WordPad or Paint) and paste the image into the application.

See also:

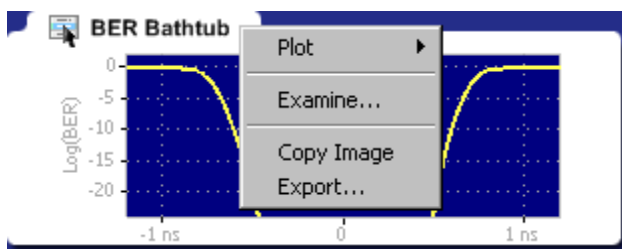
[Exporting Raw Plot Data \(see page 52\)](#)

About Exporting Plot Files

There are two ways to export plot information from the 80SJNB application for use in other applications:

- You can export the numerical data that is represented in the plot figure. This may be useful for performing additional data processing.
- You can create an image file that captures the current plot view. This is a useful way to document your results.

The application offers the following choices from the drop-down list (right-mouse click over the selected plot).



- Plot lets you select a different plot to display in the window. The window displays the new plot based on the acquired data.
- Examine... opens a MATLAB plot window which provides additional tools to more closely examine plot characteristics.
- Copy Image saves the contents of the plot window as an image file.
- Export... saves the numerical values from the plot window in text or MATLAB format.

NOTE. *Export plot functions are disabled whenever the application is actively sequencing.*

See also:

[Exporting Raw Plot Data \(see page 52\)](#)

[Exporting Plot Images \(see page 50\)](#)

[File Name Extensions \(see page 14\)](#)

Exporting Raw Plot Data

The 80SJNB provides two methods to export the raw plot data:

- **Export Waveform...** Accessed from the File menu, exports the underlying acquired waveform and correlated pattern data used for processing.
- **Export...** Accessed from the plot window, exports the data used to create the plot image. This method allows access to any node along the signal path.

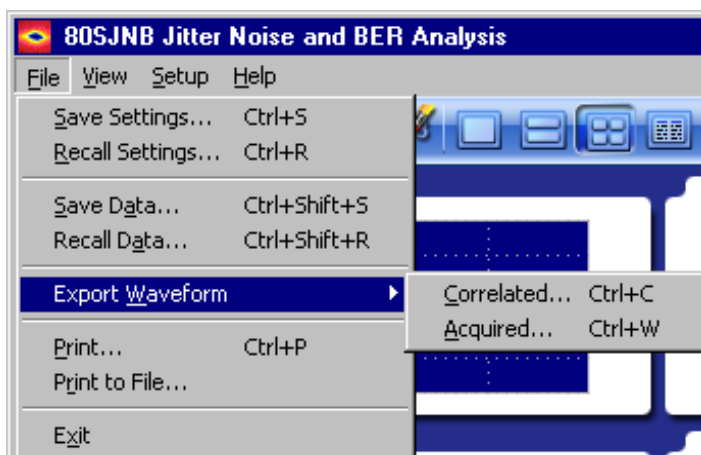
NOTE. *The 80SJNB application can produce files that are too large for some spreadsheet programs to load completely. However, you can use a text editor to view the entire file.*

Export Waveform

To export the waveform data used for processing, follow these steps:

1. Select File > Export Waveform... to display the Export Data dialog box.

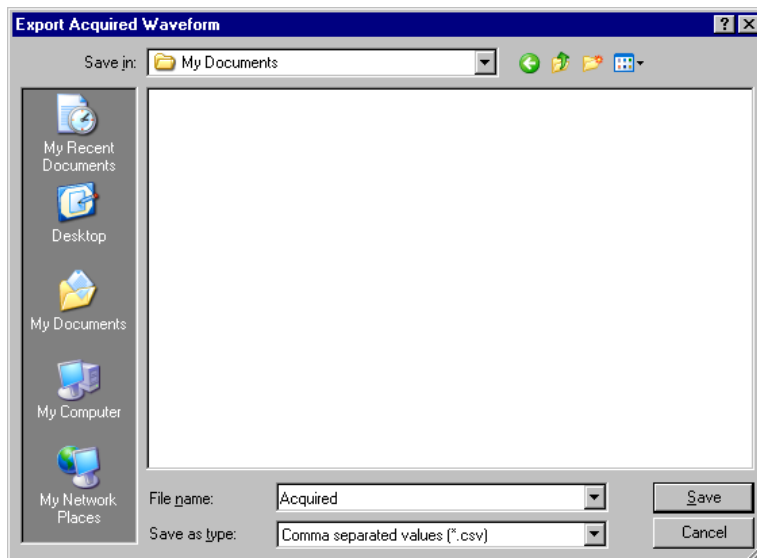
Choose either Correlated or Acquired as the export type. The Acquired waveform contains the raw acquired pattern before any processing is done on it. (The only processing on the raw data is interpolation for NULL points.) The Correlated waveform is the result of filtering of the Acquired Waveform to eliminate the uncorrelated components, such as random and periodic jitter and noise.



2. Select the directory where you would like to save the data and name the file.

By default, the selection list defaults to the filename "Correlated" or "Acquired" (depending on the selection), and offers to place the file in the Windows/My Documents folder. The default data type is Comma Separated Values (.csv).

If you have a keyboard attached, you can change the filename.




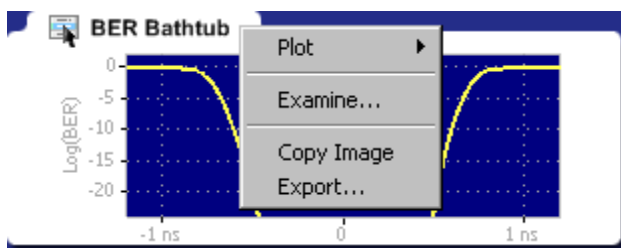
3. Use the drop-down list for Data Format and select the file type. The choices are:
 - Comma Separated Values (.csv) – ASCII text that can be loaded into a spreadsheet.
 - MATLAB (.mat) – Binary data in the native MATLAB 7.0 format.

TIP. Binary files typically use about 40% more disk space as text files.

Export

To export the numeric data used to create a specific plot, follow these steps:

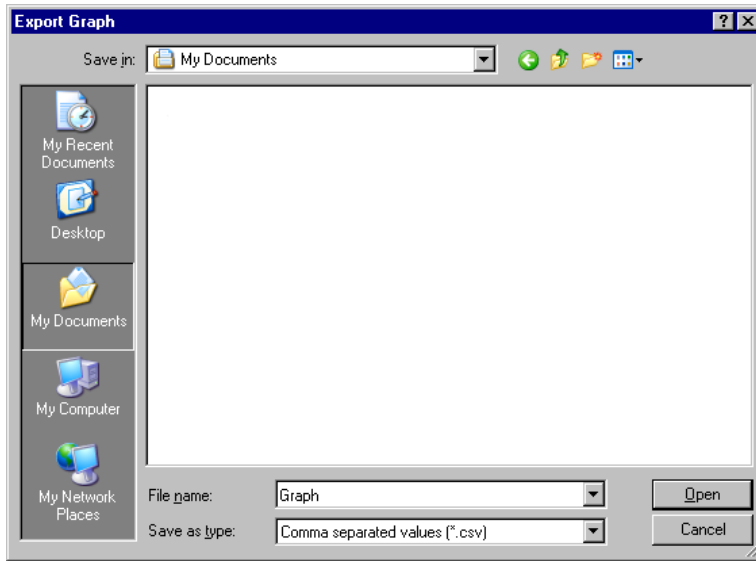
1. Touch the  area of the plot window of the plot you want to export. (If using a mouse attached to the instrument, right-click anywhere within the plot window of the plot you intend to export.)
2. Select Export... from the drop-down menu.



3. Use the Export Waveform dialog box to select the directory where you would like to save the data and name the file.

By default, the selection list defaults to the filename "Graph", and offers to place the data in the My Documents folder. The default data type is Comma Separated Values (.csv).

If you have a keyboard attached, you can change the filename.



4. Use the drop-down list Data Format to select the file type. The choices are:

- Comma Separated Values (.csv) – ASCII text that can be loaded into a spreadsheet.
- MATLAB (.mat) – Binary data in the native MATLAB 7.0 format.

See also:

[Copying Plot Images \(see page 50\)](#)

Jitter Plots

Jitter plots	Description
DDJ vs Bit ¹	Data Dependent Jitter versus Bit displays the deviation of edge crossings at the user-specified Decision Threshold for each bit of the entire pattern. The pattern itself is shown in the background for cross reference. If the pattern is very long, the bits will be visible only when opening the graph with Examine...
DDPWS vs Bit ¹	Data Dependent Pulse Width Shrinkage versus Bit displays the pulse width shrinkage for each isolated one and zero in the pattern.
DDJ PDF	Data Dependent Jitter Probability Density Function is the histogram of the data pattern correlated jitter, including Duty Cycle Distortion. The PDF is composed of the crossing deviations at the user specified Decision Threshold of all edges of the data pattern.
DDJ Spectrum ¹	The Data Dependent Jitter Spectrum is the result of the time domain to frequency domain transformation of the series of crossing deviations of data pattern edges at the user specified Decision Threshold.
RJ PDF	Random Jitter Probability Density Function shows the Gaussian distribution of the random, unbounded, uncorrelated jitter component. It is computed from data acquired on a single edge of the bit stream.

Jitter plots	Description
PJ PDF	Periodic Jitter Probability Density Function represents the histogram of the uncorrelated, bounded, periodic jitter component. It is computed by spectral separation of the jitter data acquired on a single edge of the bit stream.
RJ*PJ Spectrum ¹	Random and Periodic Jitter Spectrum represents the spectral distribution of the uncorrelated jitter acquired on a single edge. The spurs represent the periodic jitter spectral lines, and the rest of the evenly distributed spectral lines compose the random jitter spectrum.
RJ*PJ PDF	Random Jitter and Periodic Jitter Probability Density Function is the histogram of the uncorrelated jitter data acquired on a single edge of the pattern.
DJ PDF	Deterministic Jitter Probability Density Function shows the distribution of the bounded jitter component. The histogram is computed by convolving the DDJ PDF with the PJ PDF.
TJ PDF	Total Jitter Probability Density Function represents the computed histogram derived from all jitter components, correlated and uncorrelated, bounded and unbounded. The convolution of DJ PDF and RJ PDF yields the Total Jitter histogram.
BER Bathtub	The BER Bathtub curve is computed as a horizontal slice of the 3-dimensional BER Eye at the Decision Threshold. It represents the extrapolated total jitter and horizontal eye opening limits at projected bit error rates.
Q Bathtub	The Q-scaled curve is a linearized scale version of the BER Bathtub curve. It represents the extrapolated total jitter and horizontal eye opening limits at projected bit error rates.

¹ The zoom feature defaults to horizontal zoom only.

Eye Plots

Eye plots	Description
Correlated Eye ¹	The Correlated Eye is a color graded eye pattern built by folding the correlated pattern at clock rates. The correlated pattern is computed from the acquired full length data pattern by filtering out the uncorrelated components.

Eye plots	Description
PDF Eyes	<p>PDF Eye plots can be computed at various stages of the signal path emulator when using the 80SJNB Advanced version. When using the Essentials version of the 80SJNB, all PDF Eye plots are identical.</p> <p>If a signal path component is not inserted into the signal path, the PDF Eye plot for the output of the component is identical to the upstream PDF Eye plot. (For example, if computing the PDF Eye plot for the output of the Channel function, but the Channel function is not inserted into the signal path, the PDF Eye plot will be identical to the PDF Eye plot of the output of the Filter function.)</p>
SP In	<p>The SP In PDF Eye is a color graded Probability Density Function representing the eye pattern at the transmission side of the signal path. It is constructed from the convolution of the Correlated Eye with uncorrelated jitter and noise probability distributions.</p>
SP Filter ²	<p>The SP Filter PDF Eye is a color graded Probability Density Function representing the eye pattern at the output of the filter if the filter function is inserted in the signal path. It is constructed from the convolution of the Correlated Eye with uncorrelated jitter and noise probability distributions.</p>
SP Channel ²	<p>The SP Channel PDF Eye is a color graded Probability Density Function representing the eye pattern at the output of the channel emulator if the Channel function is inserted in the signal path. It is constructed from the convolution of the Correlated Eye with uncorrelated jitter and noise probability distributions.</p>
SP Equalizer ²	<p>The SP Equalizer PDF Eye is a color graded Probability Density Function representing the eye pattern at the output of the Equalizer if the Equalizer function is inserted in the signal path. It is constructed from the convolution of the Correlated Eye with uncorrelated jitter and noise probability distributions.</p> <p>This selection was displayed as PDF Eye in 80SJNB application versions prior to version 2.1.</p>
BER Eye ¹	<p>The BER Eye is a three-dimensional color graded map representing the predicted bit error rates at all decision thresholds and sampling phases in the unit bit interval.</p>
Q Eye ¹	<p>The Q Eye is a three-dimensional color graded map representing the predicted bit error rates at all decision thresholds and sampling phases in the unit bit interval with a linearized Q-scale, rather than the BER logarithmic scale.</p>
BER Contour ¹	<p>The BER Contours show the boundaries of the eye opening at the projected bit error levels.</p>

¹ Eye plot is computed at the end of the signal path, regardless of using the 80SJNB Advanced or Essentials version.

² The 80SJNB Advanced version (with Signal Path emulator) provides PDF Eye plots at the various stages (functions) of the emulator. If the function is not inserted, the PDF Eye plot is identical to the upstream plot.

Noise Plots

Noise plots	Description
DDN vs Bit ¹	Data Dependent Noise versus Bit displays the data levels sampled at the user specified Sampling Phase through the entire pattern. The pattern itself is shown in the background for cross reference. If the pattern is very long, the pattern bits will be visible only when opening the graph with Examine...
RN*PN PDF	Random and Periodic Noise Probability Density Function is the histogram of the uncorrelated noise distribution on data acquired on a single flat spot of logic level 1 of the bit stream.
RN PDF	Random Noise Probability Density Function shows the Gaussian distribution of the random, unbounded, uncorrelated noise component. It is computed from data acquired on a single flat spot of logic level 1 of the bit stream.
PN PDF	Periodic Noise Probability Density Function represents the histogram of the uncorrelated, bounded, periodic noise component. It is computed by spectral separation of the noise data acquired on a single flat spot of logic level 1 of the data stream.
DN PDF	Deterministic Noise Probability Density Function shows the distribution of the bounded noise component. The histogram is computed by convolving the DDN PDF with the PN PDF.
DDN PDF	Data Dependent Noise Probability Density Function is the histogram of the data pattern correlated noise distribution on both logic levels 1 and 0. It includes the data levels at all user specified unit bit interval Sampling Phase.
TN PDF	Total Noise Probability Density Function represents the computed histogram derived from all noise components, correlated and uncorrelated, bounded and unbounded. The convolution of DN PDF and RN PDF yields the Total Noise histogram.
RN*PN Spectrum ¹	Random and Periodic Noise Spectrum represents the spectral distribution of the uncorrelated noise acquired on a single flat spot of logic level 1. The spurs represent the periodic noise spectral lines, and the rest of the evenly distributed spectral lines compose the random noise spectrum.
DDN Spectrum ¹	The Data Dependent Noise Spectrum is the result of the time domain to frequency domain transformation of the series of level samples taken on all bits at the user specified Sampling Phase of the unit bit interval.
BER Bathtub	The BER Bathtub curve is computed as a vertical slice of the 3-dimensional BER Eye at the user specified unit bit interval Sampling Phase. It represents the extrapolated total noise and vertical eye opening limits at projected bit error rates.
Q Bathtub	The Q-scaled curve is a linearized scale version of the BER Bathtub curves. It represents the extrapolated total noise and vertical eye opening limits at projected bit error rates.

¹ The zoom feature defaults to horizontal zoom only.

Pattern Plots

Pattern plots¹ can be computed at various stages of the signal path emulator when using the 80SJNB Advanced version. When using the Essentials version of the 80SJNB, all Pattern plots are identical.

If a signal path component is not inserted into the signal path, the plot for the output of the component is identical to the upstream plot. (For example, if computing the pattern plot for the output of the Channel function, but the Channel function is not inserted into the signal path, the pattern plot will be identical to the pattern plot of the output of the Filter function.)

Pattern plots	Description
SP_In ¹	The Signal Path Input signal plots the correlated pattern at the transmission side of the Signal Path, the input to the simulated serial link. The correlated pattern results when the acquired pattern is filtered for the removal of the uncorrelated jitter and noise components. For closer examination of the pattern, use Examine... which provides pan and zoom capabilities, and data cursors.
SP_Filter ¹	The Signal Path Filter output plots the correlated pattern at the output of Filter, if the Filter function is inserted in the signal path. The selected Filter file determines the effects of the Filter function on the waveform. If the Filter function is not inserted in the signal path, The SP_Filter displays the upstream waveform, in this case SP_In.
SP_Channel ¹	The Signal Path Channel output plots the correlated pattern at the output of the Channel emulator if the Channel function is inserted in the signal path. The selected S-parameter or time domain waveform set determines the attributes of the signal at the output of Channel. If the Channel function is not inserted in the signal path, SP_Channel displays the upstream waveform which could be the SP_Filter or SP_In function of signal path configuration.
SP_Equalizer ¹	The Signal Path Equalizer output plots the correlated pattern at the output of the Equalizer if the Equalizer function is inserted in the signal path. The configuration of tap numbers and tap values determines the attributes of the equalizer and shapes the signal at the output. If the Equalizer function is not inserted, SP_Equalizer plot displays the upstream signal which could be any of the previous patterns, depending on the signal path configuration.

¹ The zoom feature defaults to horizontal zoom only.

SSC Plot

SSC plot	Description
SSC Profile ¹	The Spread Spectrum Clocking profile displays the function used for modulating the serial link clock frequency. If the "SSC is present" check box is checked in the Acquisition setup dialog, the profile plot is displayed.

¹ The zoom feature defaults to horizontal zoom only.

About Application Parameters

These topics list the 80SJNB application parameters and include the menu default settings. The parameter tables list the selections and startup values for each option.

[Analysis Settings \(see page 59\)](#)

[Acquisition Settings \(see page 60\)](#)

[Signal Path Settings \(see page 61\)](#)

Refer to the GPIB topics for a list of the GPIB Command Syntax along with the arguments, variables, and variable values that correspond to the 80SJNB parameters.

You should refer to the documentation for your TekScope for operating details of the oscilloscope controls.

See also:

[GPIB Reference Materials \(see page 63\)](#)

Analysis Settings

This table lists the default values of the Analysis settings when the 80SJNB application is first started. If you change these settings, they remain in effect for all successive sessions of the application.

Control	Startup settings
Decision Threshold	Normalized: 50%
Time Unit	Seconds
Sampling Phase	Unit Intervals: 0 UI
Measurement BER	1.00E-12

Acquisition Settings

This table lists the default status of the Acquisition settings when the 80SJNB application is first started. If you change these settings, they remain in effect for all successive sessions of the application.

Control	Startup settings
Signal	
Source	First valid input channel
SSC Present	Off
Difference Waveform	
Positive	First valid input channel
Negative	blank
Data Pattern	
Rate	User defined
Pattern Length	User defined
Pattern Sync	
Source	First channel with a PatternSync Trigger module
Data:Clock Ratio	1:01
Signal Conditioning	
Wavelength	None
Filter	None
Bandwidth	blank
Clock Recovery	
Source	First channel containing a module with clock recovery
Rate	None
Phase Reference	
Source	None
Frequency	blank

Signal Path Settings

This table lists the default status of the Signal Path settings when the 80SJNB application is first started. If you change these settings, they remain in effect for all successive sessions of the application.

Control	Startup settings
Filter	
Uncorrelated Scaling	1.00
Channel	
Data Type	Frequency Domain
Uncorrelated Scaling	1.00
Equalizer	
Taps	
FFE Taps	1
FFE Taps/Symbol	1
DFE Taps	0
Filter	
FFE Reference Tap	1
Uncorrelated Scaling	1.00
Rise Time Selector	Track Data Rate
User Rise Time (ps)	200

Remote Control Introduction

The 80SJNB software application can be controlled programmatically through the programmatic interface of the sampling oscilloscope on which it is running. Communication with the application is accomplished using VARIABLE:VALUE remote GPIB commands.

Your program should comply with the following guidelines:

- The application startup must complete before sending additional GPIB commands to the application. Querying the variable "Application" returns "80SJNB" when the application startup is complete.
- The measurements cycle must complete before you query data. Querying the variable DataReady returns "True" when the data is ready.

Because the oscilloscope software hosts the GPIB interface for the 80SJNB application, there is some additional information that will be helpful for successful programming.

See also:

[GPIB Reference Materials \(see page 63\)](#)

[Programming Tips \(see page 63\)](#)

[Variable:Value Commands \(see page 65\)](#)

[Results Queries \(see page 72\)](#)

[Program Example \(see page 75\)](#)

GPIB Reference Materials

To use GPIB commands with your TekScope, you can refer to the following materials:

- The [Program Example \(see page 75\)](#) topic for guidelines to use while designing a GPIB program.
- The online Programmer Guide for the TekScope.

See also:

[Starting and Setting Up the Application Using GPIB \(see page 63\)](#)

Programming Tips

How the Variable Value Table Works

Programmable Interface (PI) commands for the 80SJNB software package (JNB) are implemented using a variable/value table. This table associates named variables with text values. These values can be set (variable:value "VariableName","VariableValue") or queried (variable:value? "VariableName") from the

PI. When a set command is received, if the variable does not already exist in the table, it is created and the specified value is associated with that variable. If the variable is already in the table, the specified value will replace the existing value. There is no checking done by the table on variable names or values. Since both items are strings, any arbitrary pair of strings can be associated with each other in this table.

Polling and Limit of Variable Values

Each time a change is made to a variable's value in the table, an event is generated. The 80SJNB software application polls the oscilloscope software application every 200 ms to see if an event occurred. If so, JNB queries for the event information which tells JNB which variable changed and the new value. JNB parses this information to find the variables pertinent to its operation and reads the new values for those variables. These new values can change the state of JNB (for example selecting a new data source channel) or can cause JNB to perform an operation (for example, setting "SequencerMode" to "Run").

Because JNB polls for changes at a fixed rate, the oscilloscope application might indicate that a list of variables has changed since the last time JNB polled for changes. There are two consequences of this operation.

- First, when JNB receives a list of changes, it does not necessarily execute those changes in the order in which they were sent to the oscilloscope from the PI. This means that sending a command to change the data source (e.g. "DataSource","C1") followed immediately by starting sequencing ("SequencerState","Run") does not guarantee that the source channel will be changed before JNB begins the sequencing operation. To ensure proper execution order of these commands, a delay of at least 400 ms should be inserted before starting certain JNB operations.

Commands that should be preceded by a delay include:

- "SequencerState","Run"
 - "ExportCurve","GO"
 - "SaveRecallData","Save"
 - "SaveRecallData","Recall"
 - "Setup","Save"
 - "Setup","Recall"
- Second, there is a limit of 15 variable/value table changes that can be reported for any one polling event. If more than 15 changes have occurred between JNB polls of the oscilloscope software, the later changes will not be seen by JNB so it will not respond to those commands.

How the Variable Value Table is Updated

JNB only updates table entries when it has new data to report. For example, if an error occurs during sequencing, the variables "ErrorCode" and "ErrorMessage" will be updated by JNB with the appropriate values. However, JNB will only update those variables if another error occurs. If a subsequent sequence is run without errors, the "ErrorCode" and "ErrorMessage" variables will continue to report the old values. The user program must be written to explicitly clear these variables, setting the variables to null strings ("") before starting a new sequence.

Variables that should be set to null strings (“”) before starting a sequence operation include:

- ErrorCode
- ErrorMessage
- DataReady

Determining if 80SJNB is Running

The “Application” variable indicates whether 80SJNB is running or not. When it is running, this variable is set to “80SJNB”. When JNB exits normally, the variable is set to “Done”. However, if JNB encounters an error and exits abnormally, it will not set the “Application” variable to “Done”, leaving the variable set to “80SJNB”. In this circumstance, it is not possible to use this variable to determine if JNB is running. One way to reliably determine if JNB is running is to set the “PatternLength” variable to “1”. If JNB is running, it will set this variable to “2” since 2 is the minimum allowable value for “PatternLength”. If JNB is not running, the variable value will remain at “1”. Be sure to wait at least 400 ms after setting the value to “1” before querying the status of this variable.

In 80SJNB versions prior to version 2.1, the JNB application did not properly reset the “Application” variable after executing a “Setup”, “Default” operation. The “Application” variable was left blank (“”), indicating JNB was not running even though it was. 80SJNB Version 2.1 has fixed this error.

Syntax

The VARIABLE:VALUE command accepts string arguments for a control or data variable and a value to which to set the argument.

To set a variable to a value:

```
VARIABLE:VALUE "<variableName>","<variableValue>"
```

NOTE. The arguments <variable name> and <variable value> are required in the order indicated with no spaces allowed.

To query the value in a variable:

```
VARIABLE:VALUE? <variable name>
```

NOTE. Commands are case and space sensitive. Your program will not operate correctly if you do not follow the capitalization and spacing precisely.

See also:

[Variable:Value Command Arguments and Queries \(see page 66\)](#)

[GPIB Commands Error Codes \(see page 73\)](#)

[Program Example \(see page 75\)](#)

Arguments and Queries

Name	Value	Function	Query form returns
Application	Exit	Exits the application	Done
Bandwidth	Any valid bandwidth as defined by the selected source module	Sets or returns the bandwidth in Hertz for use when Filter is set to None	Current value
BER	Any valid floating point value between 1e-3 and 1e-24 inclusive	Sets or returns the current BER value	Current value
CeActive	{True False}	Activates or deactivates the channel emulator	True, False
CeDomain	Time Frequency	Sets the domain in which the channel characteristics are defined	Current value
CeFdSParametersFile	Full path name of a filename	Defines the channel's S-parameter	Current value
CeFd2PortMatrixSelector	{11 12 21 22}	Selects an S-parameter when using a 2-port Touchstone file	Current value
CeFd4PortDataType	{SingleEnded Differential}	Selects the type of data when using a 4-port Touchstone file	Current value
CeFd4PortLayout	{DC21 CD21 12DC 12CD}	Sets the data arrangement used by a 4-port Touchstone file containing Differential data	Current value
CeFd4PortMapping	Any permutation of 1234 (e.g., 1234, 1324 or 2143)	Sets the port mapping used by a 4-port Touchstone file containing SingleEnded data	Current value
CeTdReferenceFile	Full path name of a filename	Defines the time domain reference waveform	Current value
CeTdTransmissionFile	Full path name of a filename	Defines the time domain transmission waveform	Current value
CeUncorrelatedScaling	Any number in the range 0.01-100.0	Sets the Channel uncorrelated scaling factor Overall signal path uncorrelated scaling factor is a product of all active uncorrelated scaling values	Current value

Name	Value	Function	Query form returns
ClockRecoveryRate	Valid values include any communication standard token for communication standards supported by the clock recovery module or a positive floating point value if the clock recovery unit supports user rates	Sets or returns the clock recovery rate	Current value
ClockRecoverySource	{CH1 CH2 CH3 CH4 CH5 CH6 CH7 CH8}	Sets or returns the clock recovery source	Current value
DataClockRatio	Accepts a ratio of 1:8 to 1:1 or 1:1 to 128:1	Sets or returns the data pattern Data:Clock ratio	Current value
DataRate	{FC266 FC266E OC9 FC531 FC531E OC12 OC18 FC1063E FC1063 OC24 ENET1250 OC36 FC2125 OC48 ENET2500 INFIniband FEC2666 ENET3125 XAUINEAR XAUI FAR FC4250 ENET9953 OC192 ENET10313 FC10519 FEC10664 FEC10709 ENET1109 OC768 FEC42657 FEC43018} Any valid positive floating point value or communication standard	Sets or returns the expected data rate	Communication standard or current value
DataReady	{True False}	Sets or returns a value indicating if sequencing is complete and data is ready to be read Setting this value to False before beginning a sequence prevents accidentally reading the DataReady value from a previous sequence before it is reset by the application.	True, False
DataSource	{CH1 CH2 CH3 CH4 CH5 CH6 CH7 CH8 MATH1 MATH2 MATH3 MATH4 MATH5 MATH6 MATH7 MATH8 <filename>}	Sets or returns the data source Math expressions must be programmed through the oscilloscope's GPIB interface commands.	Current value filename is the name of the file recalled
DecisionThresholdAbs	Any valid floating point value	Sets or returns the absolute decision threshold value	Current value

Name	Value	Function	Query form returns
DecisionThresholdPct	Any valid floating point value between 0.0 and 1.0 inclusive	Sets or returns the normalized decision threshold value	Current value
DecisionThresholdUnits	{Absolute, Normalized}	Sets or returns the desired decision threshold value to use By setting the units to Absolute, the DecisionThresholdAbs value is used. If the units are set to Normalized, the decision threshold is calculated based on waveform data according to the DecisionThresholdPct normalized value.	Current value
EqActive	{True False}	Activates or deactivate the equalizer	True or False
EqAutosetTaps	{Run}	Automatically computes the equalization coefficients SpCompute must be run first	Current value or Done, Error
EqDFETaps	An integer in the range 1-40	Sets the number of DFE taps	Current value
EqDFETapCoefficient<n> where <n> is in the range 1-40	Any number in the range -100.0 to +100.0	Sets the value of a DFE tap coefficient	Current value
EqDefaultDFETaps ²	{Run}	Sets the DFE taps to default values	Current value or Done, Error
EqDefaultFFETaps ²	{Run}	Sets the FFE taps to default values	Current value or Done, Error
EqFFEReferenceTap	An integer in the range 1 – EqFFETaps	Selects the FFE reference tap EqFFEReferenceTap-1 must be an integer (possibly 0) multiple of EqFFETapsPerSymbol	Current value
EqFFETaps	An integer in the range 1-100	Sets the number of FFE taps	Current value
EqFFETapsPerSymbol	One of 1, 2, 5, 10 but not larger then EqFFETaps	Sets the number of FFE taps per symbol or unit interval	Current value
EqFFETapCoefficient<n> where <n> is in the range 1-100	Any number in the range -100.0 to +100.0	Sets the value of an FFE tap coefficient	Current value

Name	Value	Function	Query form returns
EqLoadTaps ²	{Run}	Loads the equalizer configuration from a file	Current value or Done, Error
EqRiseTimeSelector	{DataRate TapInterval User}	Defines how the equalizer rise time is determined	Current value
EqSaveTaps ²	{Run}	Saves the equalizer configuration to a file	Current value or Done, Error
EqTapsFilename	Full path name of a file	Sets the file used for EqLoadTaps and EqSaveTaps	Current value
EqUncorrelatedScaling	Any number in the range 0.01-100.0	Sets the Equalizer uncorrelated scaling factor Overall signal path uncorrelated scaling factor is a product of all active uncorrelated scaling values	Current value
EqUserRiseTime	An integer in the range 1-4000	When EqRiseTimeSelector is set to User, this defines the rise time in picoseconds	Current value
ErrorCode		Returns a numeric code corresponding to the last error or 0 if no error	Current value
ErrorMessage		Returns the last error message	Current value
ExportCurve ^{2 3}	{GO}	Sets or returns the export action	Current value or Done, Error Error is returned if export is unsuccessful
ExportFilename	<filename> ¹	Sets the filename used when exporting data	
ExportFormat	{CSV, MAT}	Sets or returns the current plot diagram export format	Current value

Name	Value	Function	Query form returns
ExportType	ACQWFM CORRWFM, RJPDF PJPDF RJPJPDF RJPJSPEC DDJPDF DJPDF DDJSPEC TJPDF DDJ HBATH QHBATH RNPDF PNPDF RNPNPDF RNPNSPEC DDNPDF DNPDF DDNSPEC TNPDF DDN VBATH QVBATH BEREYE QEYE PDFEYE CORREYE BERCONTOUR SPCHANPDFEYE SPCHANWFM SPFILTWFM SPFILTPDFEYE SPINPDFEYE SPINWFM SPEQWFM SSCPROFILE	Sets or returns the type of export to perform	Current value
FiActive	{True False}	Activates or deactivates the filter	True, False
FiFilename	Full path name of a filename	Defines the filter file	Current value
FiUncorrelatedScaling	Any number in the range 0.01-100.0	Sets the Filter uncorrelated scaling factor Overall signal path uncorrelated scaling factor is a product of all active uncorrelated scaling values	Current value
Filter	Any valid communication standard as defined by the selected source module	Sets or returns the communication standard of the source	Current value
NegativeDataSource	{CH1 CH2 CH3 CH4 CH5 CH6 CH7 CH8}	Sets or returns the negative data source used for differential math waveform	Current value
PatternLength	Any integer value between 2 and 32768	Sets or returns the data pattern length in bits	Current value
PatternSyncSource	{CH1 CH2 CH3 CH4 CH5 CH6 CH7 CH8 TRIGPROBE}	Sets or returns the pattern sync source channel	Current value
PhaseReferenceEnabled		Indicates whether the data was acquired with a phase reference unit active or not for both acquired and recalled data	True, False

Name	Value	Function	Query form returns
PhaseReferenceFrequency	Any valid phase reference frequency as defined by the selected phase reference source module	Sets or returns the phase reference frequency	Current value
PhaseReferenceSource	{C1C2 -or- C1_C2, C3C4 -or- C3_C4, C5C6 -or- C5_C6, C7C8 -or- C7_C8}	Sets or returns the phase reference source module	Current value
RecallDataFilename	<filename> ¹	Specifies the name of the file when recalling a saved data file	
RecallFilename	<filename> ¹	Sets the name of the file when recalling a setup	
SamplingPhase	Any valid floating point value between -0.5 and +0.5 inclusive	Sets or returns the normalized sampling point value	Current value
SamplingPhaseAbs	Any valid floating point value	Sets or returns the absolute sampling point value	Current value
SamplingPhaseUnits	{Absolute, Normalized}	Sets or returns the desired sampling point value to use. If the units are set to Absolute, the SamplingPhaseAbs value is used. If the units are set to Normalized, the sampling point is calculated based on waveform data according to the SamplingPhase normalized value.	Current value
SaveDataFilename	<filename> ¹	Sets the filename used when saving data files	
SaveFilename	<filename> ¹	Sets the filename used when saving setup files	
SaveRecallData ³	{Save, Recall}	Save saves the acquired data to the filename specified by the command SaveDataFilename Recall recalls the acquired data from the filename specified by the command RecallDataFilename	Done, Error Error is returned if unsuccessful
SequencerMode	{SingleSequence, FreeRun}	Sets the sequencer mode Startup default is Free Run	Sequencer mode

Name	Value	Function	Query form returns
SequencerState ³	{Run Pause Stop}	Sets or returns the Measurement Sequencing or the Stop Sequencing command	Sequencer state
Setup ³	{Recall Save Default}	Performs the Save/Recall/Default setup action	Current value or Done, Error Error is returned if unsuccessful
SpCompute ²	{Run}	Recomputes results with the latest Signal Path definition on the acquired data	Current value or Done, Error
SSC	{True False}	Selects whether SSC is present in the signal Setting to True requires a phase reference module to be installed and configured	Current value
TimeUnits	{S UI}	Sets or returns the units for the time scale	S, UI
Wlength	Any valid wavelength as defined by the selected source module	Sets or returns the wavelength of the sources	Current value

¹ <filename> is a string of 1 to 40 characters that are valid for filenames according to the Windows file system standards.

² After running the default setup command, this argument is not initialized and a query returns an empty string "".

³ Command should be preceded by a delay of at least 400 ms.

Variable:Value Results Queries

These values, when used with the Variable:Value command, return the results for the individual measurement results.

Value	Function
DCD	Returns the Duty Cycle Distortion.
DDJ	Returns the Data Dependent Jitter.
DDN	Returns the Data Dependent Noise.
DDN0	Returns the Data Dependent Noise on logical level 0.
DDN1	Returns the Data Dependent Noise on logical level 1.
DDPWS	Returns the measured Data Dependent Pulse Width Shrinkage.
DJ	Returns the measured Deterministic Jitter.
DJDD	Returns the Deterministic Jitter computed in the Dual Dirac model.
DN	Returns the measured Deterministic Noise.
EA	Returns the amplitude of the eye computed as the mean-to-mean of logical 1 and logical 0 bit levels sampled at the user defined Sampling Phase.

Value	Function
EOH	Returns the Horizontal Eye Opening at user specified BER.
EOV	Returns the Eye Opening at user-specified BER.
PJ	Returns the measured Periodic Jitter (peak-to-peak).
PJH	Returns the Horizontal component of periodic jitter (peak-to-peak).
PJV	Returns the Vertical component of periodic jitter (peak-to-peak) induced by noise converted to jitter through an average slew rate.
PN	Returns the measured Periodic Noise.
PNH	Returns the Horizontal component of periodic noise (peak-to-peak) induced by jitter converted to noise through an average slew rate.
PNV	Returns the Vertical component of periodic noise (peak-to-peak).
RJ	Returns the measured Random Jitter (RMS).
RJH	Returns the Horizontal component of random jitter (RMS).
RJV	Returns the Vertical component of random jitter induced by noise converted to jitter through an average slew rate (RMS).
RJDD	Returns the Random Jitter computed in the Dual Dirac model.
RN	Returns the measured Random Noise.
RNV	Returns the Vertical component of random noise.
RNH	Returns the Horizontal component of random noise induced by jitter converted to noise through an average slew rate.
TJ	Returns the Total Jitter at user-specified BER.
TN	Returns the Total Noise at user-specified BER.
SSCfreq	Returns the spread spectrum clock modulation frequency.
SSCmag	Returns the spread spectrum clock modulation magnitude.

GPIB Commands Error Codes

Error code	Description
-1	Read error message, no error code available <i>NOTE. If an error code of -1 is returned, use the Error Message query for error condition details.</i>
1	The channel does not support bandwidth
2	Phase characterization failed
3	No data to export
4	Not allowed to change setting while sequencing
5	Invalid value
6	Argument cannot be null
7	Value is outside the range of acceptable values
8	Query curve returned no data
9	Unexpected GPIB response
10	No data source selected

Error code	Description
11	One or more WfmDBs are enabled, turn them off to continue
12	Trigger failure, check your configuration
13	The pattern is not synchronized or is too small
14	Can't export the curve
15	Couldn't analyze edge
16	Histogram testing is enabled; turn it off to continue
17	Mask testing is enabled; turn it off to continue
18	One or more measurements are enabled; turn them off to continue
19	Waveforms other than 80SJNB signal source are enabled; turn them off to continue
20	Save setup failed
21	Recall setup failed
22	The channel does not support wavelength
23	Curve has multiple components
24	A Mag View is enabled; turn it off to continue
25	SSC activation failed; phase reference module required
26	SSC activation failed; setup phase reference module
27	Save data failed
28	Recall data failed

Introduction

An example of communicating with the 80SJNB application using VARIABLE:VALUE remote GPIB commands is to simply start the application by sending the following command:

```
APPLICATION:ACTivate "80SJNB"
```

A more extensive program example is provided that steps you through the following actions:

1. Starting the application.
2. Configuration and setting analysis state variables.
3. Starting and checking the state of the acquisition and processing cycle.
4. Check for errors.
5. Query measurement results.
6. Export data.

Go to the [example sequence of program commands \(see page 75\)](#).

See also:

[About the GPIB Program and Guidelines \(see page 63\)](#)

[GPIB Reference Materials \(see page 63\)](#)

[Variable:Value Command \(see page 65\)](#)

[Results Queries \(see page 72\)](#)

Program Example

This topic provides some example programming steps to accomplish a set of tasks. The examples are provided to help you become familiar with designing your own GPIB programs.

NOTE. *All words within quotes are case sensitive and must be entered exactly as shown, including spaces and quotes.*

Configure and Operate the 80SJNB

The following sequence of commands demonstrates the GPIB commands used to configure and operate the 80SJNB jitter analysis application. All commands are sent to the instrument which hosts the programmable interface for the 80SJNB.

1. Send the command to start the 80SJNB application.

```
APPLICATION:ACTIVATE "80SJNB"
```

2. Set the signal source channel, data rate, pattern length, and data-to-clock ratio to be analyzed.

```
VARIABLE:VALUE "DataSource", "CH1"
```

```
VARIABLE:VALUE "DataRate", "10.3125e9"
```

```
VARIABLE:VALUE "PatternLength", "32767"
```

```
VARIABLE:VALUE "DataClockRatio", "1:1"
```

3. Set the following variables before starting the analysis. The application updates these values to signal the application's analysis state.

```
VARIABLE:VALUE "DataReady", "False"
```

```
VARIABLE:VALUE "ErrorCode", ""
```

4. Start the acquisition and processing cycle.

```
VARIABLE:VALUE "SequencerState", "Run"
```

5. Check the state of the acquisition and processing cycle.

Query the following variables:

```
VARIABLE:VALUE? "DataReady"
```

```
VARIABLE:VALUE? "SequencerState"
```

Loop until DataReady is True or SequencerState is Stop.

6. Check to see if there were errors.

```
VARIABLE:VALUE? "ErrorCode"
```

If the response for ErrorCode is not 0 then an error has occurred. Query

```
VARIABLE:VALUE? "ErrorMessage"
```

to retrieve the error message.

7. If the DataReady variable is set to True (queried in step 5), you can query for measurement results. For example to query the deterministic jitter:

```
VARIABLE:VALUE? "DJ"
```

8. You can also export the plot data. The following commands set the format, data to export, filename, and then exports the data.

```
VARIABLE:VALUE "ExportFormat", "CSV"
```

```
VARIABLE:VALUE "ExportType", "DJPDF"
```

```
VARIABLE:VALUE "ExportFilename", "C:\My Documents\MyDJPDF.csv"
```

```
VARIABLE:VALUE "ExportCurve", "GO"
```

9. Query the ExportCurve variable to determine when the data export has completed:

```
VARIABLE:VALUE? "ExportCurve"
```

The application sets the ExportCurve value to "Done" when the data has been exported.

Measuring Jitter in Presence of SSC

The following instruction sequence illustrates jitter analysis in presence of SSC and the measurement of the SSC characteristics.

NOTE. *The system configuration should include the 82A07 Clock Recovery unit that supports SSC, and it is assumed that you will properly set up the instrument. The TekScope needs to be configured with an 82A04 Phase Reference module, required for the measurements in presence of SSC.*

1. Send the command to start the 80SJNB application.

```
APPLICATION:ACTIVATE "80SJNB"
```

2. Set the signal source channel, data rate, pattern length, and data-to-clock ratio

```
VARIABLE:VALUE "DataSource", "CH1"
```

```
VARIABLE:VALUE "DataRate", "3e9"
```

```
VARIABLE:VALUE "PatternLength", "127"
```

```
VARIABLE:VALUE "DataClockRatio", "1:1"
```

3. Initialize analysis state and error code.

```
VARIABLE:VALUE "DataReady", "False"
```

```
VARIABLE:VALUE "ErrorCode", ""
```

- Instruct 80SJNB to look for SSC.

```
VARIABLE:VALUE "SSC", "True"
```

- Set up the phase reference module source and frequency since it is required for SSC analysis

```
VARIABLE:VALUE "PhaseReferenceSource", "C7_C8"
```

```
VARIABLE:VALUE "PhaseReferenceFrequency", "3e9"
```

- Set up the 82A07 clock recovery unit that supports SSC. Set clock frequency to 3e9. Refer to the documentation for the 82A07 for more details.

The instructions are included in the table below.

Data rate range	Clock recovery frequency (80A07)	Clock recovery output rate (80A07)	Data-to-clock ratio (JNB)	Phase reference frequency (JNB)
500 Mbps – 1 Gbps	Data Rate * 4	Standard	1:4	Data Rate * 4
1 Gbps – 2 Gbps	Data Rate * 2	Standard	1:2	Data Rate * 2
2 Gbps – 4 Gbps	Data Rate	Standard	1:1	Data Rate
4 Gbps – 8 Gbps	Data Rate	Subrate (1/2)	2:1	Data Rate/2
8 Gbps – 12.5 Gbps	Data Rate	Subrate (1/4)	4:1	Data Rate/4

- Clear the error code to prepare for starting the application.

```
VARIABLE:VALUE "ErrorCode", ""
```

- Start the acquisition and processing cycle.

```
VARIABLE:VALUE "SequencerState", "Run"
```

- Check the state of the acquisition and processing cycle. Query the following variables:

```
VARIABLE:VALUE? "DataReady"
```

```
VARIABLE:VALUE? "SequencerState"
```

Loop until DataRead is True or SequencerState is Stop.

- Check if there were errors:

```
VARIABLE:VALUE? "ErrorCode"
```

If the response for ErrorCode is not 0, then an error has occurred. Query:

```
VARIABLE:VALUE? "ErrorMessage"
```

- If the DataReady variable is set to True, and no errors have occurred, you can query for measurement results.

For example to query the periodic jitter and total jitter:

```
VARIABLE:VALUE? "PJ"
```

VARIABLE:VALUE? "TJ"

12. Query for SSC measurements, magnitude and frequency.

VARIABLE:VALUE? "SSCmag"

VARIABLE:VALUE? "SSCfreq"

13. You can also export the SSC profile. The following commands set the format, data to export, filename, and then export the data.

VARIABLE:VALUE "ExportFormat", "CSV"

VARIABLE:VALUE "ExportType", "SSCPROFILE "

VARIABLE:VALUE "ExportFilename", "C:\My Documents\mySSCprofile.csv"

VARIABLE:VALUE "ExportCurve", "GO"

14. Query the ExportCurve variable to determine when the data export has completed.

VARIABLE:VALUE? "ExportCurve"

The application sets the ExportCurve value to "Done" when the data has been exported.

Compensating for Signal Path Impairments with Equalization

The following programming example illustrates a sequence of commands that configures the Signal Path with a Channel emulator which causes severe ISI. Then an Equalizer is inserted and configured to compensate for the effects of the ISI and assess the results of equalization by measuring data dependent jitter and vertical eye opening.

NOTE. The 80SJNB Advanced option must be enabled. The S-parameter file is available from examples, *Sdd21.s1p*, located in My Documents.

1. Send the command to start the 80SJNB application.

APPLICATION:ACTIVATE "80SJNB"

2. Set the signal source channel, data rate, pattern length, and data-to-clock ratio.

VARIABLE:VALUE "DataSource", "CH1"

VARIABLE:VALUE "DataRate", "9.95328e9"

VARIABLE:VALUE "PatternLength", "127"

VARIABLE:VALUE "DataClockRatio", "1:1"

3. Initialize the analysis state and error code.

VARIABLE:VALUE "DataReady", "False"

VARIABLE:VALUE "ErrorCode", ""

4. Start the acquisition and processing cycle.

```
VARIABLE:VALUE "SequencerState", "Run"
```

5. Check the state of the acquisition and processing cycle.

Query the following variables:

```
VARIABLE:VALUE? "DataReady"
```

```
VARIABLE:VALUE? "SequencerState"
```

Loop until DataRead is True or SequencerState is Stop.

6. Check if there were errors.

```
VARIABLE:VALUE? "ErrorCode"
```

If the response for ErrorCode is not 0, then an error has occurred. Query:

```
VARIABLE:VALUE? "ErrorMessage"
```

7. If the DataReady variable is set to True and no error has occurred, you can query for measurement results. Query the data dependent jitter and vertical eye opening:

```
VARIABLE:VALUE? "DDJ"
```

```
VARIABLE:VALUE? "EOV"
```

8. Select an S-parameter file from the examples provided, and insert the Channel emulator into the Signal Path.

```
VARIABLE:VALUE "CeDomain", "Frequency"
```

```
VARIABLE:VALUE "CeFdSPParametersFile", " C:\My Documents\Sdd21.s1p"
```

```
VARIABLE:VALUE "CeActive", "True"
```

9. Recompute the Signal Path and measure DDJ and vertical eye opening again.

```
VARIABLE:VALUE "SpCompute", "Run"
```

Wait and query the recomputation state for completion. When completed, SpCompute query will return Done, unless error is encountered in which case state will be Error.

```
VARIABLE:VALUE? "SpCompute"
```

```
VARIABLE:VALUE? "DDJ"
```

```
VARIABLE:VALUE? "EOV"
```

NOTE. Note the values of DDJ and EOJ.

10. Compute an optimal set of tap coefficients for a specified number of FFE and DFE taps by running Autoset Taps.

```
VARIABLE:VALUE "EqFFETaps", "20"
```

```
VARIABLE:VALUE "EqDFETaps", "10"
```

VARIABLE:VALUE "EqAutosetTaps", "Run"

Test for completion by querying the state of autoset. It will return Run before completion, then Done or Error. If data is not recognized as a PRBS pattern, an error condition is returned.

VARIABLE:VALUE? "EqAutosetTaps"

11. Save the taps in a file.

VARIABLE:VALUE "EqTapsFilename", "C:\My Documents\myTaps.tap"

VARIABLE:VALUE "EqSaveTaps", "Run"

Check for completion by querying:

VARIABLE:VALUE? "EqSaveTaps"

12. Insert the Equalizer in the Signal Path with the newly configured equalization taps.

VARIABLE:VALUE "EqActive", "True"

13. Recompute the Signal Path again with the Equalizer inserted.

VARIABLE:VALUE "SpCompute", "Run"

Wait and query the recomputation state for completion. When completed, query SpCompute until it is not Run. Then check to see if the result is Done or Error.

VARIABLE:VALUE? "SpCompute"

14. If SpCompute query is Done, ask for measurement results.

VARIABLE:VALUE? "DDJ"

VARIABLE:VALUE? "EOV"

NOTE. Note the values of DDJ and EOV and compare with the previous two sets looking for the effects of the Channel and the Equalizer.

About the Application Example

This simplified application example gives you a sample on how to setup and use the application. This may help you when setting up your own test situation.

Requirements:

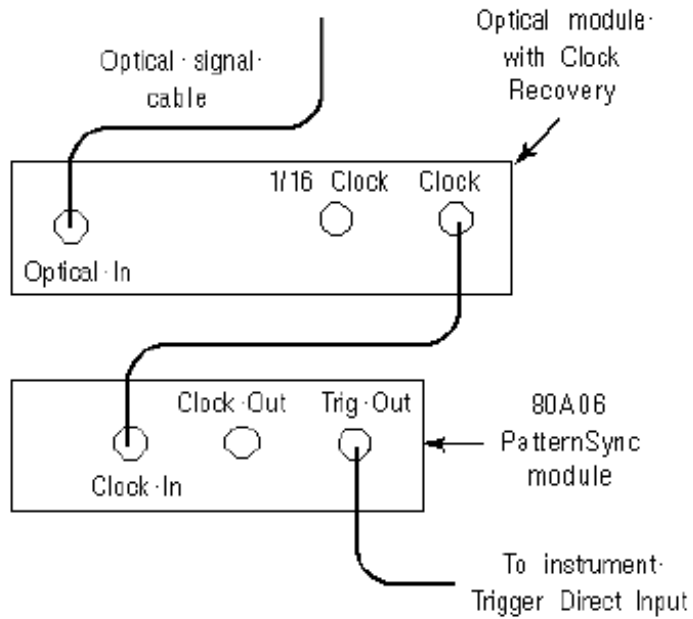
- DSA8200, TDS/CSA8000B, or TDS/CSA8200 series oscilloscope
- 80SJNB software
- 80A06 PatternSync Trigger Module
- Optical module with clock recovery
- SMA cables

NOTE. *If your oscilloscope setup includes a second monitor, you can select and drag the title bar of the online help window to position it in the second monitor. This allows you to display these application examples in the second monitor, and still view the waveform (or a plot) and the 80SJNB measurement results on the oscilloscope.*

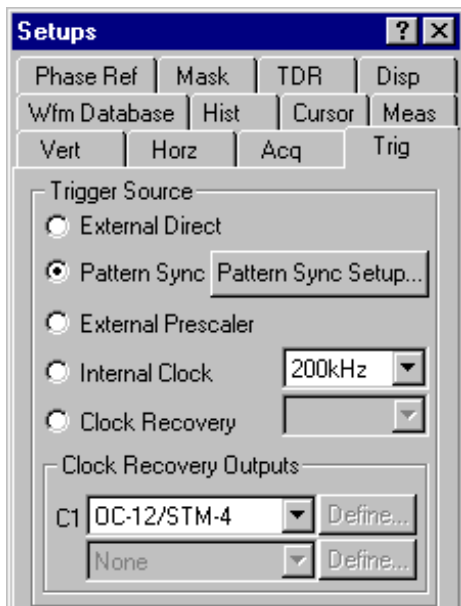
Setup the Oscilloscope

This quick demo demonstrates the 80SJNB application on an Optical signal for fast analysis of BER, Jitter, and Noise.

1. Install the modules and make the signal connections.



2. Turn on the instrument. After startup, perform the following setup steps:
3. Press the Default Setup button on the instrument.
4. Select CH1 on the instrument.
5. Press the SETUP DIALOGS button on the instrument.
6. Set the Horizontal scale to 5 ns.
7. In the Setups dialog box, select the Trig tab.
8. Select Pattern Sync as the trigger source.
9. Press the Pattern Sync Setup... button.

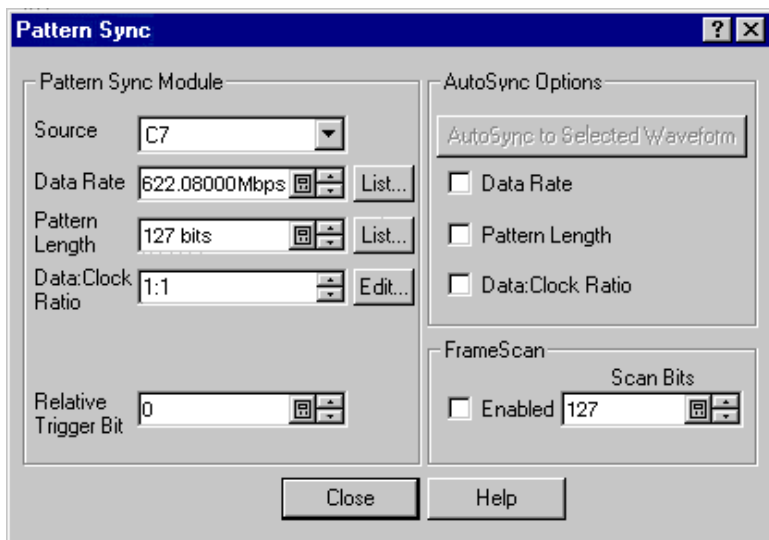


10. Enter the Data Rate and Pattern Length.

11. Set the Data Rate to 622.08 Mbps.

12. Set the Pattern Length to 127 bits.

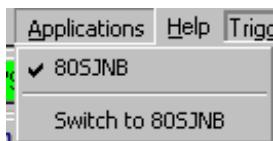
13. Close the dialog box.




You should now have a stable signal display. If not, the 80SJNB application may fail to acquire data. Recheck all settings, signal source, and connections.

Setup the 80SJNB Application

1. Start the 80SJNB application. With the TekScope application displayed, use the Applications menu on the toolbar bar and select the 80SJNB application.

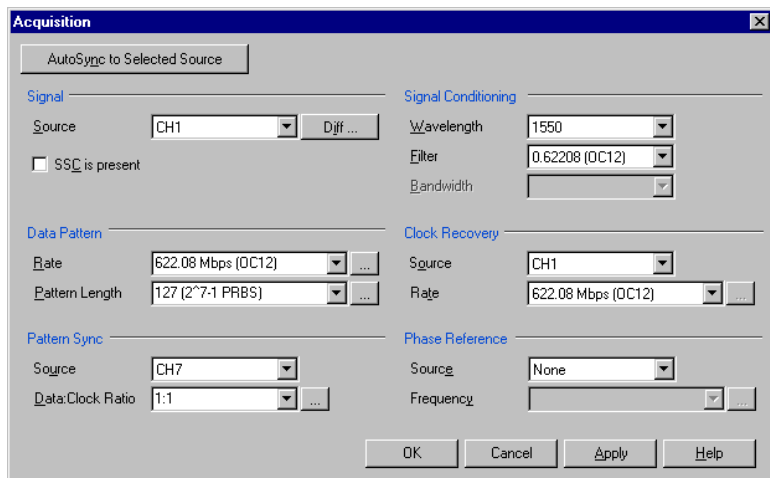


You can also use the Windows desktop shortcut or the Windows Start menu by selecting Start > Programs > Tektronix Applications > 80SJNB > 80SJNB.


1. Wait for the 80SJNB application to finish loading.
2. Display the acquisition dialog box by pressing .
3. Most of the configuration settings will most likely be filled at this time since it read the oscilloscope configuration. If not, you can press the AutoSync to Selected Waveform button to sync the Source, Data Pattern, and Pattern Sync settings to the oscilloscope.

Since this is an optical signal and we're using the clock recovery signal, you'll need to select the optical signal filter and select the clock recovery settings.

The setup we're using doesn't include a Phase Reference module so set this to None.

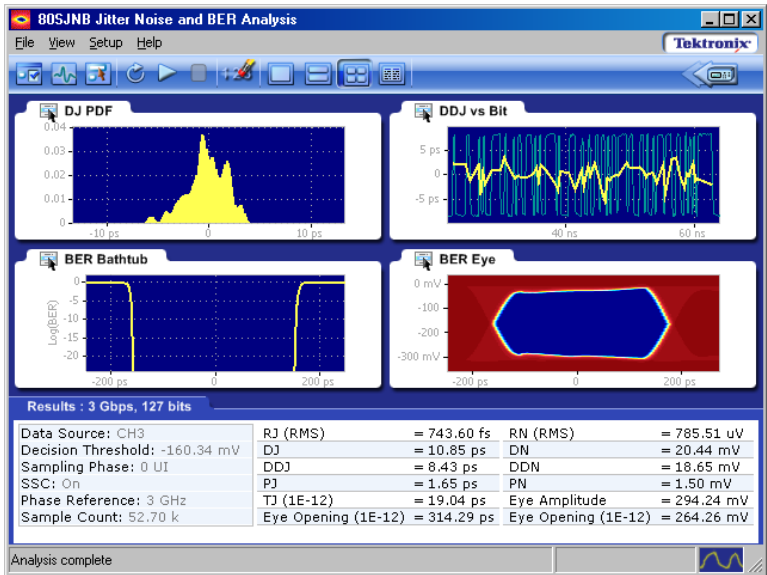


Close the dialog box.

4. Press  to start the acquisition and processing cycle.

While the cycle is running, you'll see the sequence of events displayed at the bottom of the application display. When the cycle is complete, the message "Analysis Complete" is displayed.


5. Once the cycle is complete, you'll see the displayed results. The example below shows a four plot display with the summary table of the numerical results.

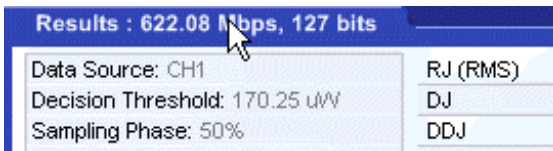



Working with the Results

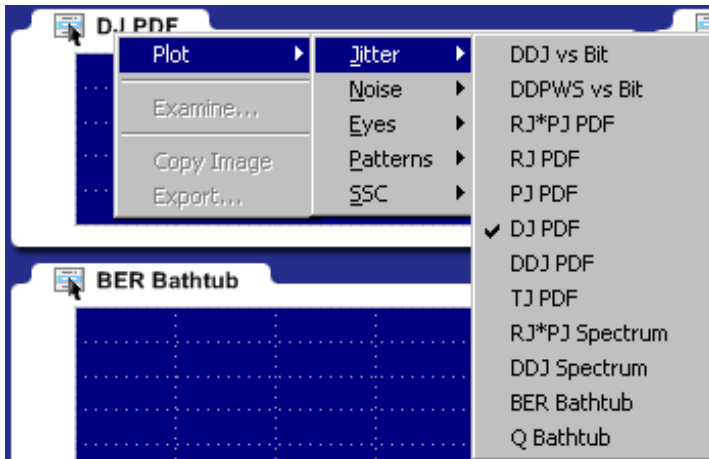
1. Press  to remove the plot displays and show the detailed table of results.

Data Source: CH3	Data Rate: 622.08 Mbps	Filter: gaussFilt0p5BW.ftf	
SSC: Off	Pattern: 127 bits	Channel: IB 5m Fxt SE.s4p	
Phase Reference: None	Sample Count: 52.70 k	Equalizer: DFE (10/5)	
Jitter (Decision Threshold: 1.71 mV)		Noise (Sampling Phase: 0 UI)	
Random Jitter		Random Noise	
RJ (RMS)	= 2.86 ps	RN (RMS)	= 676.65 uV
RJ(h) (RMS)	= 1.52 ps	RN(v) (RMS)	= 676.65 uV
RJ(v) (RMS)	= 2.42 ps	RN(h) (RMS)	= 1.55 uV
Deterministic Jitter		Deterministic Noise	
DJ	= 111.34 ps	DN	= 97.73 mV
DDJ	= 91.69 ps	DDN	= 95.62 mV
DCD	= 12.85 ps	DDN(level 1)	= 95.46 mV
		DDN(level 0)	= 100.32 mV
PJ	= 7.57 ps	PN	= 2.09 mV
PJ(h)	= 1.26 ps	PN(v)	= 2.09 mV
PJ(v)	= 7.46 ps	PN(h)	= 1.29 uV
Total Jitter @ BER		Total Noise @ BER	
TJ (1E-12)	= 145.11 ps	TN (1E-12)	= 106.23 mV
Eye Opening (1E-12)	= 1.46 ns	Eye Opening (1E-12)	= 244.50 mV
		Eye Amplitude	= 350.73 mV
Dual Dirac		SSC Modulation	
RJ(d-d)	= 3.32 ps	Magnitude	= 0 ppm
DJ(d-d)	= 98.34 ps	Frequency	= 0 Hz


2. Redisplay the plot (or plots) by selecting one of the plot display buttons . You can click on the Results tab to minimize the detailed list to summary list.



3. With the plots now redisplayed, click on one of the  icons to display the drop-down menu. The menu provides several functions, one of which is to select a different type of plot to display in that window.



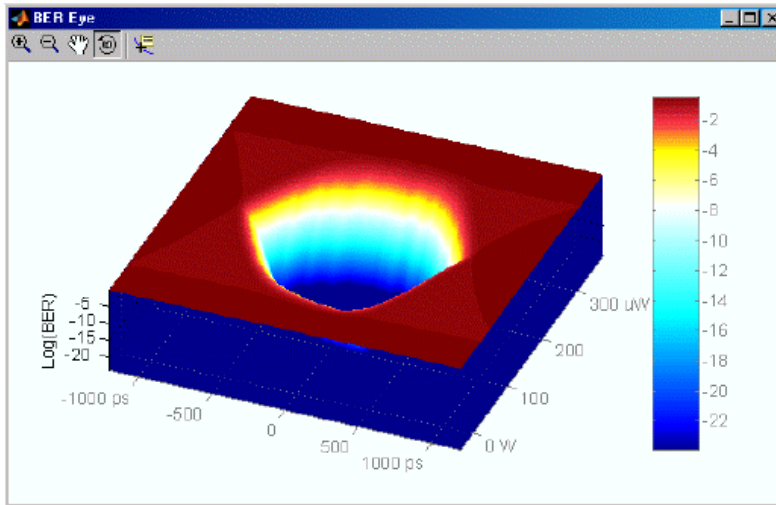
You can select any plot type. The plot will be displayed based on the data based on the results of the last processing cycle.

4. To further examine a plot, you can display any plot in a MATLAB window, providing you with more tools to work with the data. Use the  icon and choose Examine...

The plot opens in the new window to provide further data analysis and visualization of the plot displays. MATLAB provides multiple capabilities to display and annotate the plot diagrams, including:

- Pan and Zoom
- 2D and 3D visualization
- Rotation
- Data Cursors
- Color enhancements

Here, the BER Eye plot was selected to examine in a 3D view by using the rotate function.



Close the window, returning to the 80SJNB display.

This is the end of the example. You can continue on by acquiring new data, displaying various types of plots, and examine the plots with the various tools available.

About Measurement Algorithms

Tektronix has developed a white paper detailing the algorithms used by the 80SJNB application to make the measurements.

Go to the Tektronix Web site to view the white papers.

www.tektronix.com

At the Tektronix home page, select **oscilloscopes > sampling**

Test Methodology

The application performs the measurement according to the following steps:

1. Configures the oscilloscope and jitter application according to the Configuration settings and Analysis settings.
2. Performs an Autoset.
3. Scans part of the pattern.
4. Analyzes the edge.
5. Acquires the jitter data.
6. Acquires the noise data.
7. Scans the full pattern.
8. Analyzes the acquired data.
9. Displays the results as statistics. You can also log the results or data points to a .csv file.
10. Displays the plots if selected.

Correlation to Real-Time Oscilloscope Jitter Measurements

The 80SJNB Jitter, Noise, BER, and Serial Data Link Analysis application is designed to make measurements in companion with the [listed sampling oscilloscopes \(see page 7\)](#).

The methodology to make these measurements on a sampling oscilloscope is quite different than the methodology to make similar measurements on a real-time oscilloscope.

Tektronix has developed a white paper that provides a correlation of measurements between the 80SJNB application and the TDSJIT3 application.

Go to the Tektronix Web site to view the white papers.

www.tektronix.com

At the Tektronix home page, select **oscilloscopes > sampling**

You can download a pdf of the white paper titled:

80SJNB Jitter Measurement Results Correlation

Index

Symbols and Numbers

- 80A06 PatternSync Trigger
 - module, 7
- 80SJNB application
 - description, 7
- 82A04 Phase Reference
 - module, 7

A

- Accessories, 8
- Acquiring Data, 43
- Acquisition, 23
- Acquisition Menu, 23
- Acquisition Settings, 60
- Algorithms, 89
- Analysis Button, 20
- Analysis Settings, 59
- Analysis Setup, 23
- Application Directory, 13
- Application Example, 81
- Application Parameters, 59
- Area Definition, 18
- Arguments and Queries, 66
- Autoset Taps, 38
- AutoSync, 23

B

- Back Button, 4
- Basic Operations, 11
- Bit Error Rate, 40
 - .BMP File, 14
- Box Definition, 18
- Browse Definition, 18

C

- Channel, 31
- Channel Conditions, 31
- Check Box Definition, 18
- Clear Data, 20
- Clearing, 17
- Clock Recovery, 24

- Command Syntax, 65
- Commands, 66
- Configuration, 23
- Configuration Requirements
 - SSC, 28
- Configuration Settings, 60
 - SSC, 28
- Configure, 20
- Conventions, 3
- Copy Plot Image, 50
- Correlation to Real-Time
 - Oscilloscope, 91
- .CSV File, 14

D

- Data Files, 45
- Data Pattern, 25
- Data Rate, 25
- Data-to-clock Ratio, 26
- Decision Threshold, 40
- Deskew, 8
- Deskewing Probes, 8
- Device Under Test, 8
- DFE Taps, 37
- Directory Structure, 13
- Displaying Measurements, 41
- Documentation, 3
- Dual Dirac Measurements, 42
- DUT, 8
- DUT Definition, 3

E

- Equalizer, 34
- Equalizer Taps, 35
- Erase, 43
- Error Codes, 73
- Examine, 49
- Example Application, 81
- Example Program, 74
- Exiting, 13
- Exiting the Application, 13
- Export, 52

- Export Directory, 13
- Export Waveform, 52
- Exporting Plot Images, 50
- Exporting Plot Information, 52
- Extensions, 14
- Eye Plots
 - BER Contour, 55
 - BER Eye, 55
 - Correlated Eye, 55
 - PDF Eyes, 55
 - Q Eye, 55
 - SP Channel (PDF Eye), 55
 - SP Equalizer (PDF Eye), 55
 - SP Filter (PDF Eye), 55
 - SP In (PDF Eye), 55

F

- Features, 1
- Feedback, 5
- FFE Taps, 36
- File Menus, 14
- File Names, 14
- File Types, 14
- Filter, 30
- Filter Conditions, 31
- Filter Files, 31
- Filters, 37
 - .FLT File, 14
- Free Run, 20
- Frequency Domain, 31

G

- Gaussian Filter, 38
- GPIB, 72
 - GPIB Commands, 63
 - GPIB Commands Error Codes, 73
 - GPIB Guidelines, 63
 - GPIB Information, 3
 - GPIB Program, 63
 - GPIB Program Examples, 75
 - GPIB Programs, 75
 - GPIB Reference Materials, 63

H

Help Topics, 4

I

Input Sources, 27
Installation Directory, 13
Intersymbol Interference, 34
ISI, 34

J

Jitter, 9
Jitter Measurements, 41
Jitter Plots
 BER Bathtub, 54
 DDJ PDF, 54
 DDJ Spectrum, 54
 DDJ vs Bit, 54
 DDPWS vs Bit, 54
 DJ PDF, 54
 PJ PDF, 54
 Q Bathtub, 54
 RJ PDF, 54
 RJ*PJ PDF, 54
 RJ*PJ Spectrum, 54
 TJ PDF, 54
Jitter Primer, 3
Jitter/horizontal, 9
.JPG File, 14
Jump, 4

K

Keyboard, 7
Keypad Definition, 18

L

Limit of Variable Values, 64
Loading Taps, 39

M

.MAT File, 14
Math, 27
Math Expressions, 27
MATLAB, 22
MATLAB® User Interface, 22
Maximizing, 13

Maximizing the Application, 13
Measurement Algorithms, 89
Measurement Bit Error Rate, 40
Measurement Results, 17
Measurements, 41
Memory, 7
Menu Bar Definition, 18
Menu Bars, 19
Menu Definition, 18
Menus, 16
Minimize, 12
Minimizing the Application, 13
Monitor, 81

N

Navigating the Application, 19
Noise Measurements, 42
Noise Plots
 BER Bathtub, 57
 DDN PDF, 57
 DDN Spectrum, 57
 DDN vs Bit, 57
 DN PDF, 57
 PN PDF, 57
 Q Bathtub, 57
 RN PDF, 57
 RN*PN PDF, 57
 RN*PN Spectrum, 57
 TN PDF, 57
Noise Separation, 9
Noise/vertical, 9
Numeric Results, 46

O

Online Help, 4
Operating Basics, 11
Operating System, 7
Optical Signal Conditioning, 26
Oscilloscope Settings, 16

P

Parameters, 59
Pattern Length, 25

Pattern Plots

 SP_Channel, 57
 SP_Equalizer, 57
 SP_Filter, 57
 SP_In, 57
Pattern Sync, 26
PatternSync, 24
Pause, 20
Pause Button, 20
Pausing, 20
PDF, 7
Phase Reference, 25
Plot Display, 20
Plot Images, 50
Plot Types, 55
 Definitions, 50
Plot Usage, 17
Plot Windows, 49
Plots, 48
Plotting, 17
Plotting Results, 49
.PNG File, 14
Polling Variable Values, 64
Port, 31
Probability Density Function, 7
Probes, 8
Product Description, 1
Program Example, 74
Program Examples, 75
Programmer Information, 63
Programming Tips, 63

Q

Queries and Arguments, 66
Query Results, 72

R

Real-Time Oscilloscope, 91
Recall
 Data Files, 14
 Setup Files, 14
Recalling Data Files, 46
Recalling Setup Files, 45
Reference Tap, 38
Related Documentation, 3
Requirements, 7
Restrictions, 7

Results, 46
 Results Display, 20
 Results for Measurements, 17
 Return to Scope, 20
 Returning to the 80SJNB
 Application, 12
 Returning to the Application, 12
 Rise Time Selector, 38
 Rotate, 22
 Run Button, 20

S

S-parameters, 31
 .S1P File, 14
 .S2P File, 14
 .S4P File, 14
 Sampling Phase, 40
 Save
 Data Files, 14
 Setup Files, 14
 Save and Recall Directory, 13
 Saving Data Files, 45
 Saving Setup Files, 44
 Saving Taps, 39
 Scaling, 40
 Scope, 20
 Scroll Bar Definition, 18
 Second Monitor, 8
 Selecting Clock Recovery, 24
 Sequence, 23
 Setting Up for Analysis, 23
 Settings, 60
 Setup Files, 44
 Setup Menus, 16
 Signal Conditioning, 26
 Signal Path, 30
 Signal Path Button, 20
 Signal Path Channel, 31
 Signal Path Filter, 31
 Signal Path Settings, 61
 Single Run, 43
 Slicer, 37
 Software, 5
 Source, 27
 Sources, 23
 Spread Spectrum Clocking
 Configuration
 Requirements, 28
 Spread Spectrum Clocking
 (SSC), 25
 SSC, 25
 SSC Modulation Measure-
 ments, 43
 SSC Plots
 SSC Profile, 58
 Start, 20
 Starting the Application, 11
 Status Bar Definition, 18
 Stop, 20
 Stop Button, 20
 Summary, 46
 Summary Table Views, 46
 Switch between applications, 12
 Switching between
 Applications, 12
 Syntax, 65

T

Table of Contents, 4
 Taking Measurements, 43
 .TAP File, 14
 Taps, 35
 Techsupport@tektronix.com, 5
 TekScope Settings, 16

Terminology in Online Help, 3
 Test Methodology, 89
 Time Domain, 33
 Time Unit, 40
 TOC, 4
 Toolbar, 20
 Toolbar Functions in Plot
 Windows, 49
 .TXT File, 14
 Types of Online Help
 Information, 4

U

Uncorrelated Scaling, 40
 User Interface, 17
 Using Online Help, 4

V

Value Table is Updates, 64
 Variable Value, 65
 Variable:Value
 Example, 74
 View, 22
 View Menus, 15
 Viewing Plots, 49
 Virtual Keyboard Definition, 18

W

Web Sites, 3
 Weights, 34
 .WFM File, 14

Z

Zoom, 22